



ALCHEMY®



England · 1977

EXTRAORDINARY DESIGN

ALCHEMY



England · 1977

Winter 2025

**E492
Death Cap**
Earrings (Pair)



See Matching Necklace
P1004 for description.

**E493
Dr Dee's
Monad**
Earrings (Pair)



See Matching
Necklace P1002
for description.

**E494
Noctis
Athena**
Earrings (Pair)



The witch's herald seeing
far into the night and the
worlds beyond, a boon
companion to ward against
evil spirits.

**E496
Evolution**
Earrings (Pair)



See Matching
Necklace P1003
for description.

**R257
Bane of Thor**
Ring - Sizes: Q/T, W/Y



Jörmungandr spawn of Loki and the
giantess Angrboda trapped in an eternal
feud with the thunder god that will lead
to their mutual destruction at the battle
of Ragnarök.

**A
1000**

◀ Proud to celebrate our
1000TH piece of Neckwear!
Immortal Ayesha.

Model is wearing :

P1000 Immortal Ayesha Necklace

E437R Empyrean Tear Earrings

R210 Claddagh By Night Ring

Model & Photo : @Kattslade

WWW.ALCHEMYENGLAND.COM

P998
Deadly Trident
Pendant

The ancient Celtic tradition of displaying enemies severed heads as trophies and warnings to strangers, is foreshadowed by the great god, Poseidon in his cataclysmic struggle against the Titans, forever armed with his 'Deadly Trident'.



P995
Dae Umbra Nili
Necklace

Nephtys, goddess of the night, tides and the dark of the moon. She is manifest in the rites of mourning, death and protection. A crucial figure in the ancient funerary rituals of the Egyptians.



P1005
Regina Covenorum
Necklace

Bastet, Queen of Covens. She rides a witches besom to bless her chosen daughters, her sickle moon inscribed with the Theban script: 'so mote it be'.



P993
Angel of Mercury
Necklace

Raphael, Archangel of Mercury the planet of divine communication. He presides over the Vernal Equinox, source of rebirth and spring. To the wise he is Azoth or Quicksilver, a key element in the quest for alchemical quintessence.



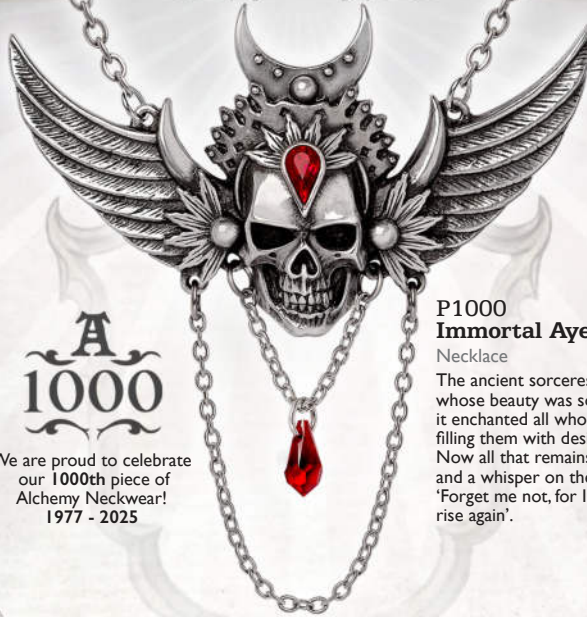
Immortal Ayesha
1000

A
1000

We are proud to celebrate our 1000th piece of Alchemy Necklace! 1977 - 2025

P1000
Immortal Ayesha
Necklace

The ancient sorceress Ayesha, whose beauty was so great that it enchanted all who beheld it filling them with desire and fear. Now all that remains is a skull and a whisper on the wind 'Forget me not, for I shall rise again'.



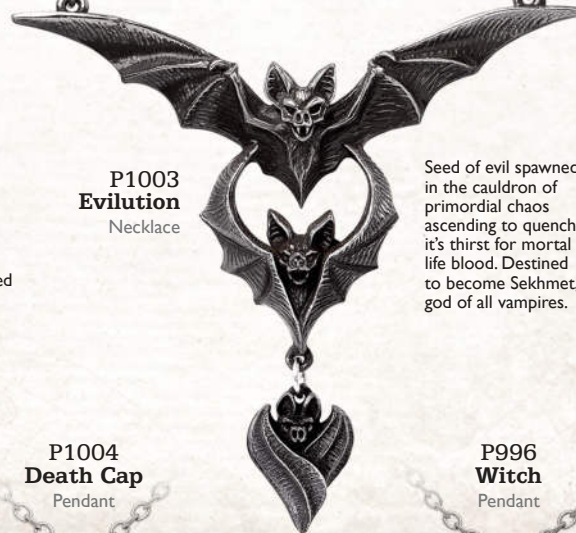
P1001
Elizabethan Necklace

Robert Dudley, Earl of Leicester's design for the ornate tracery arches above the north entrance to the 16th century Kenilworth Castle, for his great secret love, Elizabeth Rex, alas, never used.



P1003
Evolution
Necklace

Seed of evil spawned in the cauldron of primordial chaos ascending to quench its thirst for mortal life blood. Destined to become Sekhmet, god of all vampires.



P1004
Death Cap
Pendant

A malevolent spirit with the power to enchant the unwary traveller with promises of wealth and fortune as they are drawn into a subterranean fungal realm where a hundred years may pass in a single night.



P996
Witch
Pendant

A witch's heart is a wild and tempestuous vessel. It follows its own path and goes where it will. Some wake in darkness whilst others sleep in light, but which witch are you?



P994
Yggdrasil Viking World Tree
Pendant

The mighty ash tree rises through the centre of the Norse cosmos, anchoring the nine realms. When the tree trembles, it signals the arrival of Ragnarok and the destruction of the universe.



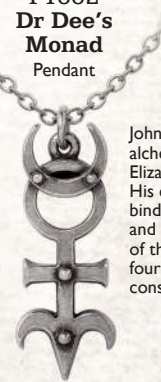
P999
Lunacorn Wand
Necklace

Charged with the power of the lunacorn goddess as maiden, mother and crone, to present a spiritual gateway to higher realms.



P1002
Dr Dee's Monad
Pendant

John Dee, court alchemist to Queen Elizabeth I of England. His cryptic talisman binds the astrological and alchemical symbols of the moon, sun, the four elements, and the constellation Aries.



P997
Servant of Baphomet
Pendant

A potent token of lost hermetic wisdom. The ancient Goat of Mendes is ordained by an ophidian vassal writhing to shed its skin, in a quest for rebirth and evolution of spirit.



ALCHEMY



England · 1977

TEARS OF THE MOON



P992B
Tears of
The Moon
Pendant



Weeping tears of black crystal for the dark secrets known only to the queen of the heavens.

P992R
Tears of
The Moon
Pendant



Weeping tears of blood crystal for the tragic secrets known only to the queen of the heavens.

P992C
Tears of
The Moon
Pendant



Weeping tears of sparkling crystal for the brightest secrets known only to the queen of the heavens.

Model is wearing :

P981 Midnight Memorial Necklace
E489 Midnight Memorial Earrings
P983 Descending Darkness Necklace

Model : @ego._garden

Photo : @Elisanth

Neckwear

**P989
Sweet
Death**
Necklace

Glorifying the immortality of perfection, as perceived in the magnificent beauty of the human skull, only truly revealing its poetic harmony once stripped of its mortal mask.

**P981
Midnight
Memorial**
Necklace

Imagine, wandering alone through the dimly gaslit alleys of Paris at la fin de siècle, following the ghost of Sebastian Melmoth - (Oscar Wilde), hopelessly searching for another chance to impress the world.

**P984
Nifheim
Lizard**
Pendant

A deeply symbolic icon, the underworld dragon represents rebirth, transformation, resilience, and one bestowed with intuition, perception and agility.

**P990
Light In
The Dark**
Necklace

The sensitive touch of the mysterious Kraken representing the depth of sentiment felt for such a sparkling heart of shining captivation.

**P987
Black Paddock**
Pendant

A midnight familiar to the most dedicated witches in English folklore, (paddock being the ancient folk name for a frog), being a close and constant companion in the sorceress' work.

**P983
Descending
Darkness**
Choker

Out of nowhere, you are suddenly and silently enshrouded by a black cloak of eternity, destined to inhabit your pallid and futile mortal existence for ever more.

**P982
Curse of
The Undoll**
Necklace

Please be warned and do not be deceived! The sweetest and most demure of angels, however convincing, just might not be as innocent as they seem...

**P991
Heart of
Blackness**
Necklace

Is there anything so lovable as the dark and mysterious rose that refuses to conform to the convention of normality and stands proudest amongst the more delicate flowers?

**P988
Mystic
Moon Cat**
Necklace

Symbolising the subconscious intuition, femininity and ferocity of the powerful and revered Egyptian goddess of the moon.

**P985
The Augurium**
Locket

The raven's shadow falls across the face of lovelorn Lenore, a fleeting omen of the brevity of youth and the chill of eternity. Blackened pewter locket.

**P986
Betrothal**
Choker (Ribbon)

Gentle pressure felt around a delicate throat inducing an amorous fervour, with this rococo masterpiece of romantic tokenism and its blood red enamelled heart of passion.

LOCKET

ALCHEMY



England · 1977

P969
Wycca Queen
Necklace



The crowned triple moon of the mother goddess endowed with the principle seal of Lilith upon the onyx disc, flanked by the alchemical sigils for mercury and sulphur.

P979
Sterne Leben
Pendant

Stars of Life in gothic form, to shine in celestial darkness.



P978
Hex Coffin
Pendant

A shining, tangible spell of protection, defying the reaper and his dark spirit of mortality by the incessant tangle of positively baneful symbology.



P972
Witch Ankh (of Menouthis)
Necklace



Dedicated by the ancient temple of Menouthis to the greatest of the Egyptian goddesses, Isis. The temple was later destroyed by the Christian Romans, but the esse continues.

Model is wearing :

P974 Lunar Moth Necklace
E483 The Trophy Earrings

Model & Photo : @Kattslade

WWW.ALCHEMYENGLAND.COM

Neckwear

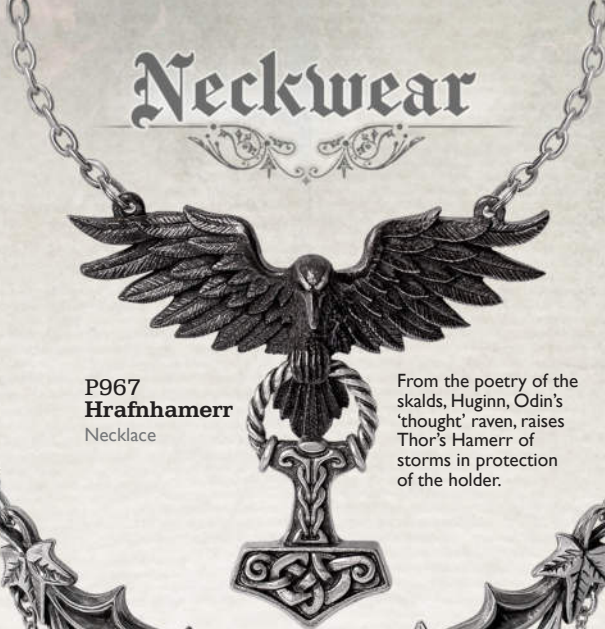
P975
Cross of
The Dark Kiss
Necklace

The escutcheon dramatis from the coffin lid, in grave memory of the eternally extant beauty so beloved of the revenant Count Magistus.



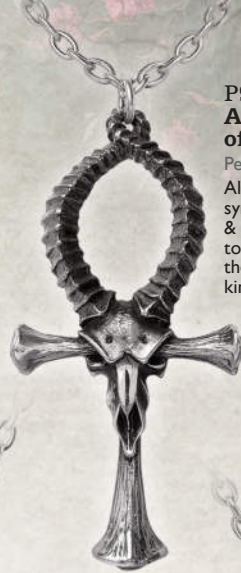
P967
Hrafnhamerr
Necklace

From the poetry of the skalds, Huginn, Odin's 'thought' raven, raises Thor's Hamerr of storms in protection of the holder.



P973
Ankh
of Ammon
Pendant

Alexander The Great's symbol of virility & rebirth, and homage to his pronounced father, the Greek Zeus-Ammon, king of gods.



P980
The Attic
Pendant

From total still and silence, suddenly, a rush and a clattering of leathern wings bursts out through the eyes with malice aforethought.



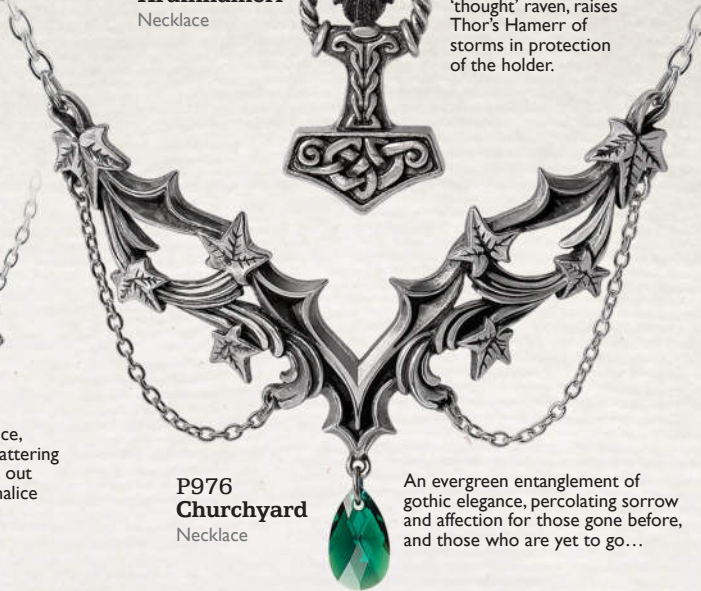
P966
Vampire's Eye
Necklace

Those before you are callously scrutinised by the glazed and sightless eye of this insatiable revenant.



P976
Churchyard
Necklace

An evergreen entanglement of gothic elegance, percolating sorrow and affection for those gone before, and those who are yet to go...



P971
Eternal
Peace
Necklace



Lilies symbolise the restored innocence and purity of the soul following a person's death, after the Virgin Mary's tomb was covered in white lilies. Supplied on chain and ribbon.

P974
Lunar Moth
Necklace



This actias, nocturnal and most rare of species, bears markings uncannily akin to the lunation of our influential moon.

P968
Vouivre
Necklace



In historic Burgundy, this legendary dragon dwelt amongst the trees and dark waters of the forest, shying from any young lovers they might encounter. Supplied on chain and ribbon.

P977
Luna Roost
Couples Necklace

Luna, the goddess and spirit of the moon, rises from the fonte noctis, the source and essence of the night - forever as one.

Two piece necklace. Can be worn together or seperately.



P970
Undying Homage
Couples Necklace

Communal acknowledgement of allegiance to the lord of Carpathia, and forever bound, body and soul, to his service.

Two piece necklace. Coffin with brass etched insert and Skeleton.



**P961
Crux Corvis**
Necklace

Cross of the Raven - the grim and auspiciously canny portent waits patiently to savour the detritus from mankind's downfall.



**P881
RIP Rose**
Pendant

Dark and deadly passion from beyond the grave. Matching Ring (R235) & Earrings (E432) available.



**P960
The Undertaker**
Necklace

Beware the temptations of the golden demon, lest you be drawn deeper still into the depths of its eternal cask.



**P919
Reflections
of Poe**
Necklace

Inspiring Edgar Allan Poe, master of the macabre to give poetic voice to the raven.



**P956
Curse of Coronis**
Necklace

The duplicitous Apollo, lover and slayer of the beautiful and forsaken Coronis, will never be free of her raven avenger.

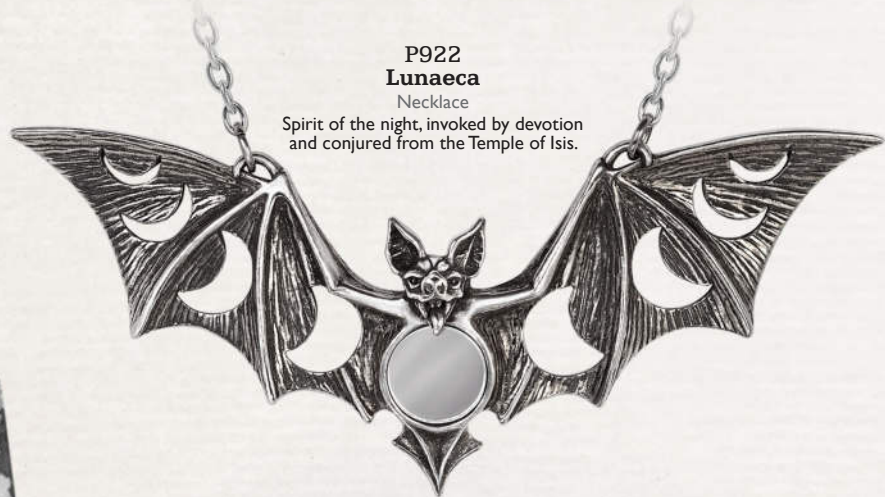


**P950
Priestess of Ishtar**
Necklace

Venus, the star of Ishtar, is central to the firmament, as the Semetic Queen of Heaven, almighty goddess of the inseparable forces of love, sex, fertility, and war.

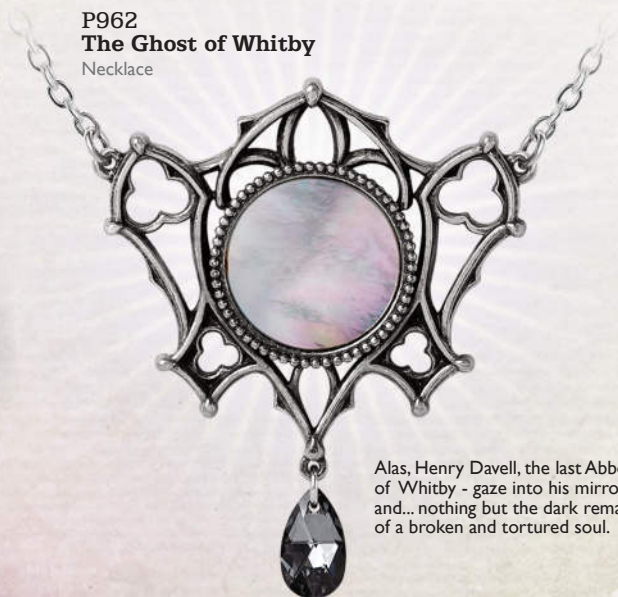
**P922
Lunaeca**
Necklace

Spirit of the night, invoked by devotion and conjured from the Temple of Isis.



**P962
The Ghost of Whitby**
Necklace

Alas, Henry Davell, the last Abbot of Whitby - gaze into his mirror and... nothing but the dark remains of a broken and tortured soul.



Model is wearing :

P950 Priestess of Ishtar Necklace

A140 Priestess of Ishtar Bracelet

E476 Priestess of Ishtar Earrings

Model: @hekate_nocturnal



Model is wearing :
P956 Curse of Coronis Necklace
E333 Black Raven Earring
Model & Photo : @Mahafsoun



P808
Awaiting
The Eventide

Pendant
A roosting vamp, silent and motionless, hungrily awaits the dusk.



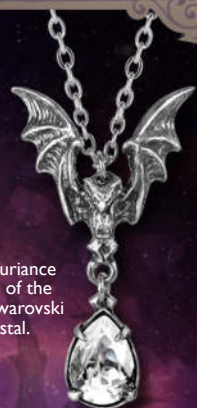
P158
Vampyr

Pendant
Vision of the nocturnal nightmare.



P597
Om Strygia

Pendant
A vampire bat of Balkan severity and proportions.



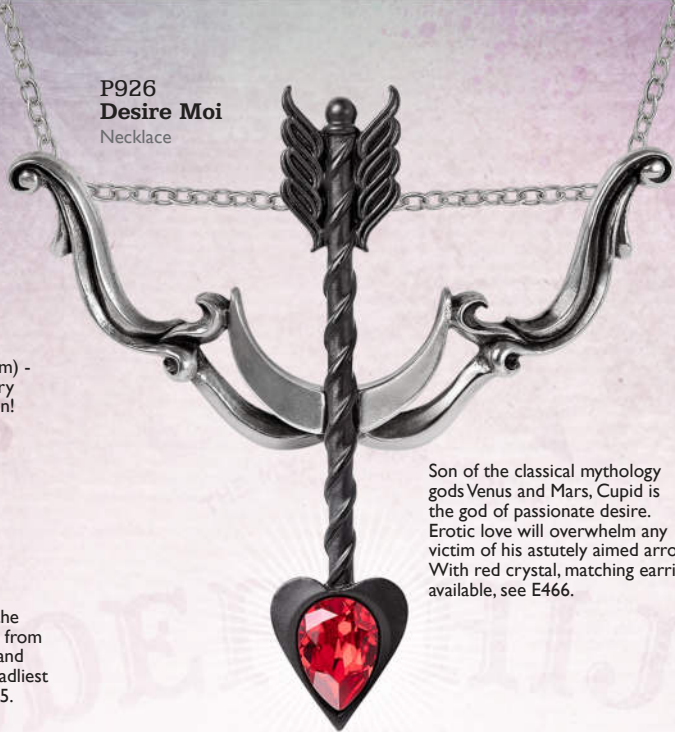
P600
La Nuit

Pendant
A crystal luxuriance on the wings of the night; with Swarovski teardrop crystal.



**P939
Playing The Devil's Tune**

Pendant
Where dance is,
there is the devil.
(Saint John Chrysostom) -
Cavort and make merry
and to Hell with refrain!



**P926
Desire Moi**
Necklace

Son of the classical mythology
gods Venus and Mars, Cupid is
the god of passionate desire.
Erotic love will overwhelm any
victim of his astutely aimed arrow.
With red crystal, matching earrings
available, see E466.



**P925
Guardian
of Soma**
Necklace

The Elixir of Life, preserved by
the faithful alchemist's familiar.



**P930
Seal of Lucifer**
Necklace

The 14th century and
very personal sign of the
fallen angel, cast down from
heaven for his power and
PRIDE, the 7th and deadliest
of sins - Isaiah 14:12-15.



**P938
My Forever Friend**
Necklace

You're never alone
with your feline familiar.



P941
Take Me With You
Showing magnet
hand fastening.

**P941
Take Me With You**
Necklace
Mortal devotion, faith and trust must endure,
to follow to the very end.



**P942
A Pact With A Prince**
Necklace

A fusion of magical sigils to entice
and invoke the powers of the moon
and angels of dark desire.



**P948
Pax**
Necklace

A runic depiction
of the universal
symbol of peace -
Nuclear Disarmament.



**P946
Lilith**
Pendant
Eve, the ultimate,
emancipated female of
Biblical and Babylonian
mythology, feared by all
misogynists as the primal
she-devil.
Shown with matching
earrings E469.

Model is wearing :
R210 Claddagh By Night Ring
P941 Take Me With You Necklace
Model: @hekate_nocturnal



P928
Carpathian Rose
Necklace



Roses are red, or
so the aphorism goes...
but not in the mountains
of Romania, where the
darkest of romances
prevail.

Model is wearing :
P928 Carpathian Rose Necklace
R244 Night With Goethe Ring
E437R Empyrean Tear droppers
Model & Photo : @Vesmedinia



P868
Infinite Love
Necklace

'Amor Aeternus'
Eternal Love and
the mysterious suitor.

P894
**Guirlande
d'Amour**
Necklace



"I am your rose,
But my love is dark,
Forsake me not, Lest
my thorns do harm".
On black ribbon, with
teardrop Austrian crystal.



P913
**Black
Rose Enigma**
Necklace

The dark rose of secrets,
understood by you alone.

P896
Blacksoul
Necklace

The black demon heart
of a gothic seductress,
nocturnally enticing her
prey with ravishing
enchantment. With black
enamelled heart.



P700
Bacchanal Rose
Necklace



A sumptuous necklace with a
romantic motif hiding, or revealing,
a secret libertine passion for wine
and sensual pleasures; with black
acrylic roses & Austrian crystals.

P823
Nocte Amor
Choker

Wings of the night, guiding the
wearer to a dark haven of passion.
On a 10mm wide, faux leather choker.



P746
Blood Heart
Necklace

The female corsair, amorous
she-wolf and destroyer of men's
hearts; red enamel heart with
two acrylic roses on black ribbon.



P721
**The Blood
Rose Heart**
Necklace



A dark romance secretly
blossoms from the life blood
of a once broken heart; with
Austrian crystals set beneath
the red enamel blood.

P949
Darken Heart
Locket Necklace

"My Dark Love"; the clandestine
attestation of a dangerous and
tenebrous paramour - to harbour
the likeness, within, of your
revenant or otherwise, cicisbeo
and leman.





P447
Blood Moon

Pendant
A skein of bats flitters
about this deep and
sinister portent.

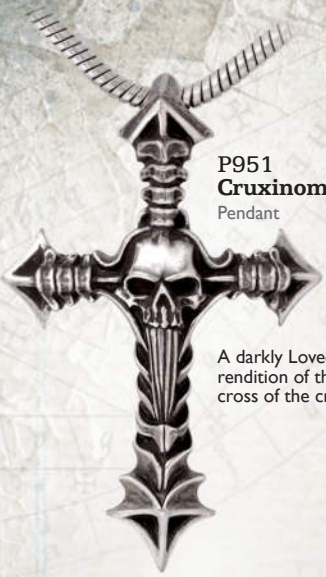


P758
Black Rosifix

Pendant
The tangled cross of
deep devotion, passion
and eternal mystery.

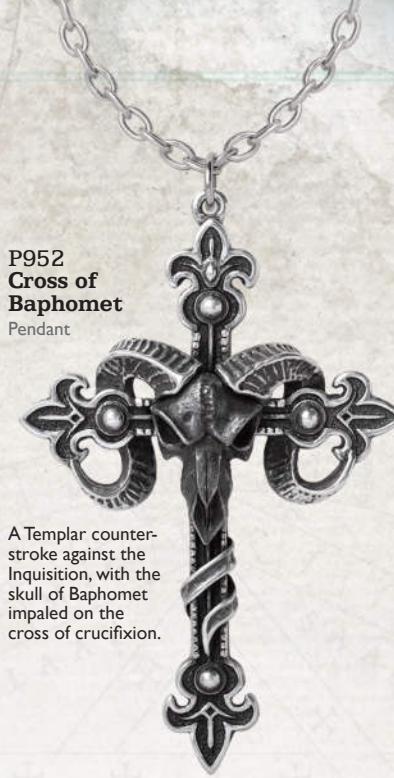


Model is wearing :
R223 Bacchanal Rose ring
P700 Bacchanal Rose necklace
Model: @hecate_nocturnal



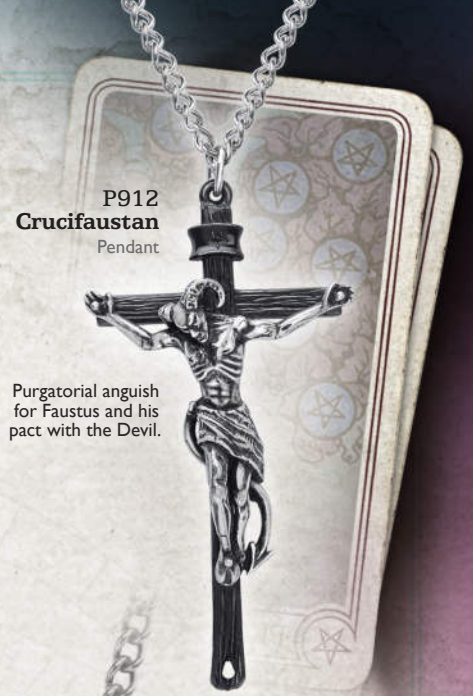
**P951
Cruxinomica**
Pendant

A darkly Lovecraftian rendition of the holy cross of the crusader.



**P952
Cross of
Baphomet**
Pendant

A Templar counterstroke against the Inquisition, with the skull of Baphomet impaled on the cross of crucifixion.



**P912
Crucifaustan**
Pendant

Purgatorial anguish for Faustus and his pact with the Devil.



**P233 ▲
Cult Of Aset**
Pendant

Translucent red enamelled solar disk, horned and throned, of the great Egyptian and universal Goddess.

**P805 ►
Red Curse**
Pendant

A powerful Evil Eye amulet to ward-off unmindful, malevolent curses; set with red taxidermal eye.



**P921
Baphometica**
Necklace

Ancient goat skulled deity, whispering wisdom from the lost cults of antiquity.



**P947
Unicursal
Hex**
Pendant

Used in the 16th by philosophers and hermetic occultists to represent the 'figure of love', and by the infamous Aleister Crowley as the heavenly macrocosm, the entwining of the planetary and elemental forces.

**P911
Sin Horned God**
Pendant
The male counterpart and consort to the wiccan's female Triple Goddess.



**P816 ▲
Cat Sith**
Pendant

Superstition and folklore pervade the mysterious black cat, known in Celtic mythology as the fairy Cat Sith.

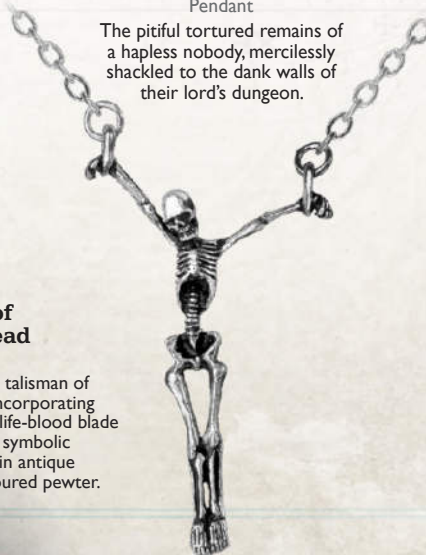


**◀ P221
Ankh of
The Dead**
Necklace

Vampyre's talisman of eternity, incorporating its secret life-blood blade inside the symbolic scabbard; in antique silver-coloured pewter.

**P190
The Lost Soul**
Pendant

The pitiful tortured remains of a hapless nobody, mercilessly shackled to the dank walls of their lord's dungeon.



**P936
Drankh**
Pendant

The Egyptian ankh, venerable symbol of eternity, is subsumed by the irresistible energy of the medieval dragon.

BAPHOMET

P906
Baphomet
Pendant

Éliphas Lévi's portrait of the goat-headed deity, and the reason for the Knights Templar's downfall.



P923
Templar's Bane
Pendant

The sigil of Baphomet, suffusing rectitude with the essence of corruption.



Model is wearing :
P921 Baphometica Necklace
Model: @paig33y

P944 ▲
Personal Baphomet
Pendant

Feeling unknown, and you're all alone. Someone to hear your prayers, someone who cares, someone who's there.

P921 ►
Baphometica
Necklace

Ancient goat skulled deity, whispering wisdom from the lost cults of antiquity.



BAPHOMETICA



**P855
Witches
Heart**
Pendant



Dark practices from the mists of antiquity, perhaps to scorn a former lover?... With black pewter heart & chained pewter piercing nail.

**P853
Sophia Serpent**
Necklace



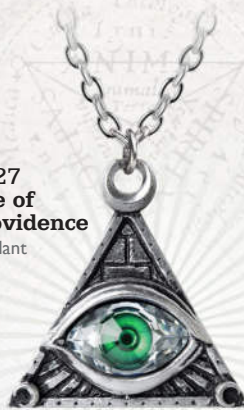
The Ouroboros, ancient symbol of eternity, rebirth and unity.



**P769
Voodoo Doll**
Pendant

Of ancient European origin, the traditional way to destroy a witch's power; with black cord noose & chained pewter piercing pin.

**P827
Eye of
Providence**
Pendant



The all-seeing eye of God and the cosmic moon to watch over you. With a green crystal eye.



**P766
Planchette**
Pendant

The spiritualist's device for communicating with the dead... ICU. Set with a realistic taxidermal eye.

**P878
Elven Star**
Pendant



The Wiccan symbol of the septagram and the sacred Faery tradition.

**P843
New
Romance**
Pendant



The new moon brings with it a promise of new love. With black acrylic rose.

**P860
Petit Ouija**
Pendant

Peep into the underworld with a talking board. Set with a red taxidermal eye.



**P810
Triple Goddess**
Choker

The pearly full moon flanked by the waxing and waning crescents invokes healing, occult protection and wealth. With mother-of-pearl & Swarovski crystals.

Shown with matching ring, R219. Can also be worn as a bracelet.



R219



**P845
Goddess**
Pendant



Combining fire, water, earth, air and spirit with Wicca's triple moon and a crystal to focus your magickal energies. With crystal dropper.

**P871
Athame**
Pendant



The ceremonial magic ritual dagger of Wicca.

**P786
Wiccan
Elemental
Pentacle**
Necklace

The five elements conjoined within the circle of the universe.



Model is wearing :
E471 Planchette earrings
P953 Hand of Glory pendant
Model : **Mahafsoun**
facebook.com/MahafsounArt



P873
Pagan Dream Catcher

Necklace
With a pentagram woven into its web, the dream snare deflects evil influences and misfortune.



P839
Love Never Dies

Necklace
Sending love from the grave...
With black acrylic rose.



P58
Pentagram

Pendant
Quintessential forces of man.



P953
Hand of Glory

Pendant
The severed and mummified hand of an executed felon, used to assist a new offender in their furtive activity, together with the Hamsa eye of protection to ward off any evil threats.



1
P365
Crystal
Pentagram



2
ULFPI
Swallow Heart



3
P876
Ravenette



4
P848
Wounded
by Love



5
P432B
Black Widow



6
P905
Bouquet
of love



7
P695
The Romance of
The Black Rose



9
P780
Hand of
Macbeth



8
P864
Rose Briar



11
P955
Baroque Rose



10
ULFP20
Devil Heart



12
P900
Batheart-The
Vampire's Kiss



- 1 **P365**
Crystal Pentagram
Pendant
Crystal-set, magical star of protection.
- 2 **ULFP1**
Swallow Heart
Pendant
Two tattoo-style swallows holding a red crystal heart; on fine trace chain.
- 3 **P876**
Ravenette
Necklace
The darkened quietude of sorrow softly intoned by the sure but slight presence of a raven on the wing.
- 4 **P848**
Wounded by Love
Necklace
The naked heart of an innocent, pierced by ill-fated romance. With translucent red enamel & black acrylic rose.
- 5 **P432B**
Black Widow
Necklace
The deadly predator, poised to sink its irresistible fangs. Matching earrings E428B & ring R222B available.
- 6 **P905**
Bouquet of Love
Necklace
A passionate symbol of devotion from the heart of a dark one. With red heart crystal dropper.
- 7 **P695**
The Romance of The Black Rose
Pendant
The most desired and most unattainable bloom known to man - an impossible dream! On 18" chain.
- 8 **P864**
Rose Briar
Necklace
A grave but beautiful garland of arcane mystique; five sinister, sable blooms standing for the elements of nature, including the fundamental focal point of the spirit.
- 9 **P780**
Hand of Macbeth
Pendant
Beware the seduction of ultimate power...With black onyx cabochon. Matching earrings E378 available.
- 10 **ULFP20**
Devil Heart
Necklace
Love is sinful, naughty and oh, so much fun! With translucent red enamelled heart & crystal highlights. Companion earrings ULFE22.
- 11 **P955**
Baroque Rose
Necklace
Discovered in a former boudoir of Palais Cardinal, Paris, this jewel was said to have been given to the favourite lover of the powerful c17 French war minister and clergyman, and notorious womaniser, Cardinal Richelieu. Matching earrings, E472.
- 12 **P900**
**Batheart-
The Vampire's Kiss**
Necklace
The silent, almost imperceptible kiss of a vampire. With red crystal.

Model is wearing :
P432B Black Widow Necklace
E428B Black Widow Earrings
R222B Black Widow Ring
R244 A Night With Goethe Ring
P986 Betrothal Choker
E437R Empyrean Tear droppers
Model & Photo : @Vesmedinia



**P889
Sacred
Cat Vanitas**

Pendant
The face of the imperious feline deity preening itself to perfection, from either side projecting its aura of confident supremacy. One side is a mirror, while the other is the face of the Sacred Cat.



**P879
Minnaloushe**

Necklace
Minnaloushe creeps and stares, lifting his changing eyes to the changing moon.



**P884
Love Cat**

Pendant
Feline love is only bestowed upon the most mysteriously exceptional individual. With translucent smoky enamel.

Model is wearing :
P895 Feline Felicity Necklace
E477C Tears of The Moon Earrings
Model : **Valentin Winter**

P940
Lucrezia's Fix
Necklace



An active woman's discreet solution to a troublesome 'encounter', as exemplified by the infamously licentious, incestuous and murderous c16 femme fatale noblewoman, Lucrezia Borgeia.

Complete with a removable magnetic bottle stopper and black rose detail.

P870
The Black Goddess

Pendant

An alternative allegory for the Triple Moon Goddess, seen from a romantically oblique perspective, with a black rose 'moon' and tangential, crystal studded crescents to celebrate the mysticism of Wicca.



P895
Feline Felicity

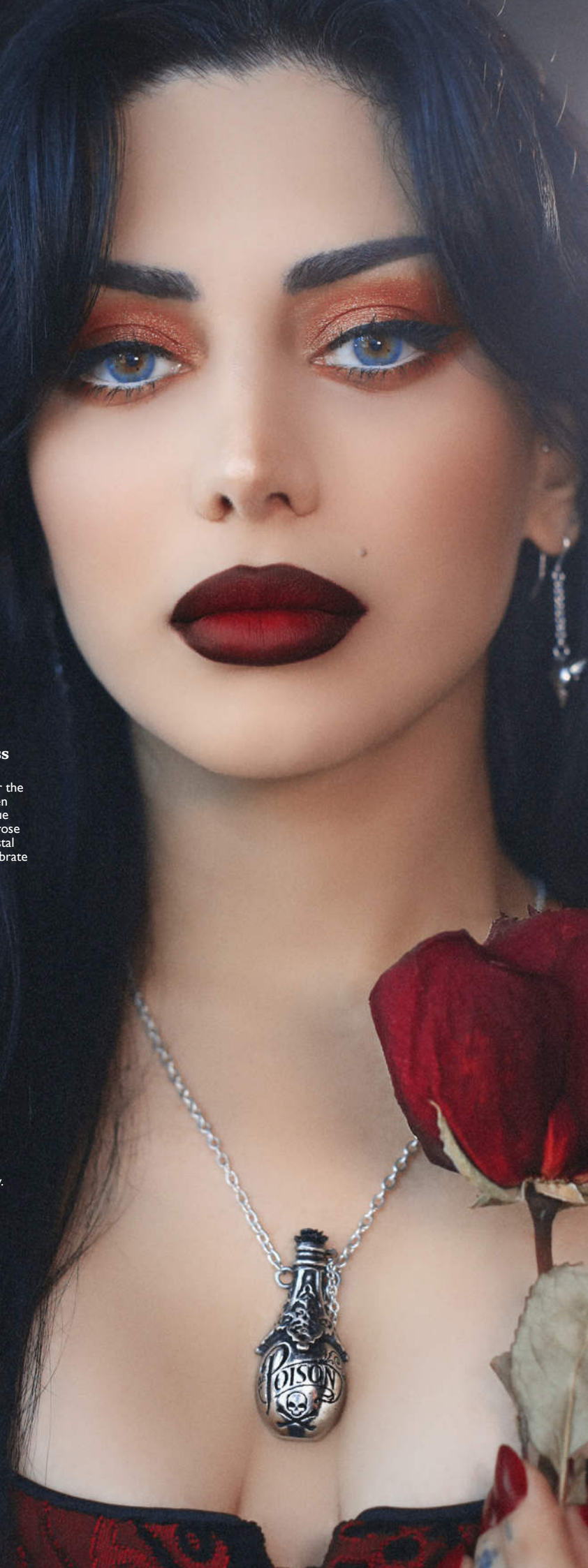
Pendant

Silent, stealthy and omnipresent, your ailuros companion confidently reflects upon your destiny.



Model is wearing :
P940 Lucrezia's Fix Necklace

Model : **Mahafsoun**
[facebook.com/MahafsounArt](https://www.facebook.com/MahafsounArt)





Model is wearing :
P818 Kraken necklace
R221 Kraken ring

Model : **Lara Mauve** - @lara_mauve
Photo : **Annie Bertram** - www.anniebertram.com

**1 P847
Gorgon's Eye**
Necklace

The very essence of the gorgon Stheno's dreaded evil eye. With green crystal eye.

**2 P920
Sombre Desir**
Necklace

Oh but to resist these wicked desires! Blackened pewter with a blood red enamel inlaid heart.

**3 P121
Gothic Bat**
Necklace

Creature of the night in full flight; on split chain.

**4 P765
Villa Diodati**
Necklace

Flitting through the silent candlelit darkness of the lakeside manor, the creature gives rise to the birth of Dracula.

**5 P807
White Hart, Black Rose**
Necklace

The hart's skull and a Black Rose is the spell to invoke arcane and passionate encounters.

An antiqued pewter stag's skull with a rose garland about its horns, the centre one being of black acrylic.

**6 P722
Alter Orbis**
Necklace

A pitifully brutal end to mortal existence, and an exquisite entry into the "Other World".

**7 P818
Kraken**
Necklace

You strain to escape the feel of the monstrous tentacles writhing to take a stranglehold on your neck... Set with a large, Volcano effect, pear-shaped Swarovski crystal.

**8 P990
Light In The Dark**
Necklace

The sensitive touch of the mysterious Kraken representing the depth of sentiment felt for such a sparkling heart of shining captivity.

**9 P888
Mammon of The Deep**
Pendant

A rapacious treasure-hoarding demon from the watery abyss, guardian of immeasurable wealth, surrendered by the forlorn victims of the cruel seas.; symbol of the Black Beach, the 'Plage Noir'.

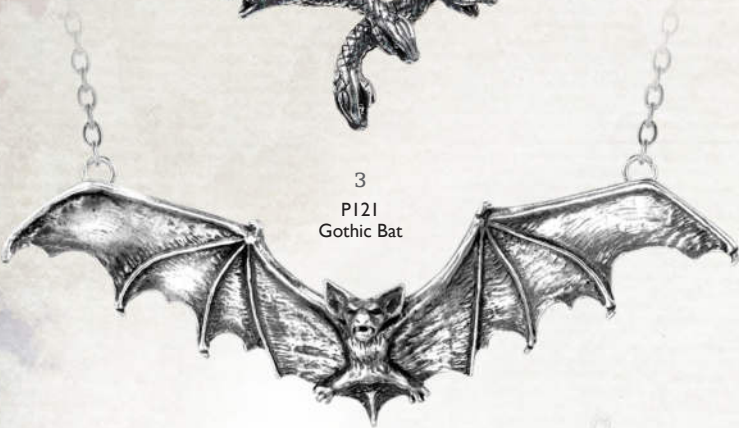
1
P847
Gorgon's Eye



2
P920
Sombre Desir



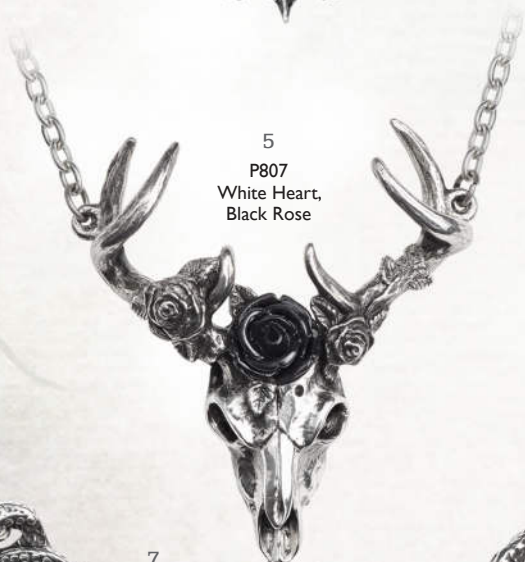
3
P121
Gothic Bat



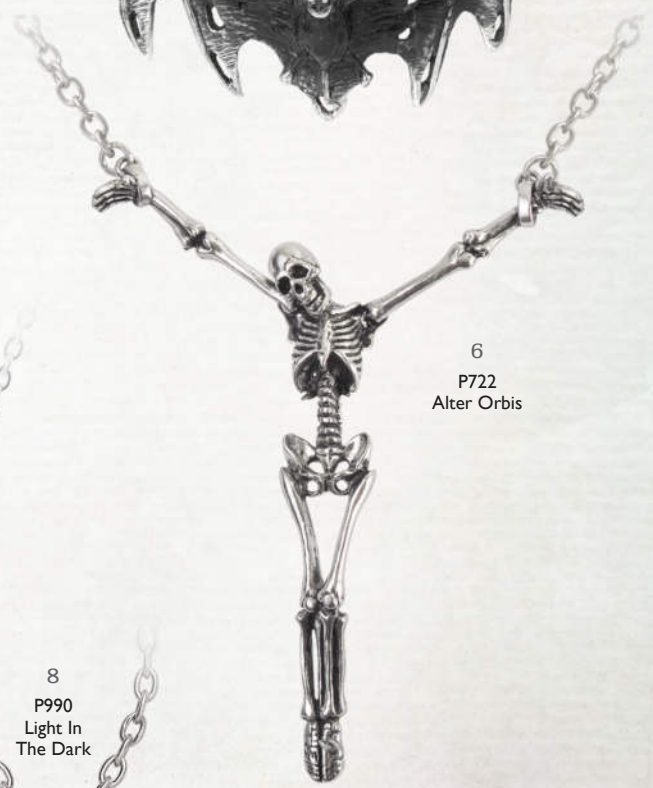
4
P765
Villa Diodati



5
P807
White Heart,
Black Rose



6
P722
Alter Orbis



7
P818
Kraken



8
P990
Light In
The Dark



9
P888
Mammon
of The Deep



E409



**P818
Kraken**
Necklace

You strain to escape the feel of the monstrous tentacles writhing to take a stranglehold on your neck... Set with a large, Volcano effect, pear-shaped Swarovski crystal. Shown with Kraken earrings, E409 and Kraken ring, R221.

R221



KRAKEN



P904 Emerald Spiderling
Necklace

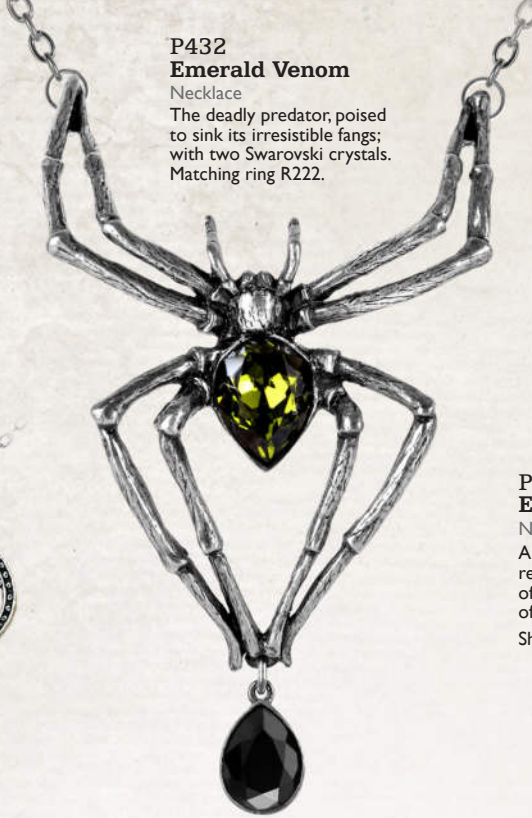
A smaller, but no less deadly predator, still poised to sink its irresistible fangs.

P235 Dante's Hex
Pendant
Mediaeval style pentagram.



P432 Emerald Venom
Necklace

The deadly predator, poised to sink its irresistible fangs; with two Swarovski crystals. Matching ring R222.



P929 Eve's Triquetra
Necklace

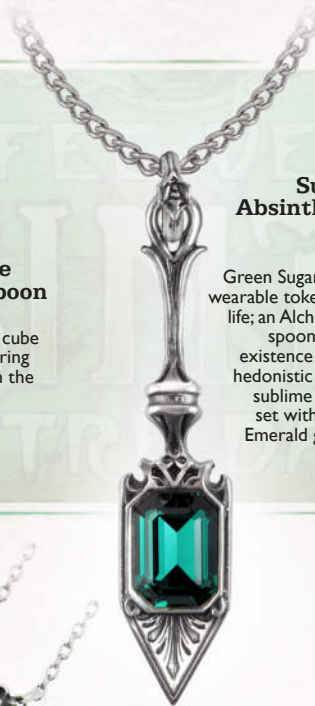
A Celtic-pagan intimation of rebellious triplicity; the eternity of the triple goddess with a touch of female wilfulness.

Shown with matching earrings E460.

E460



ACWT4 La Fée Verte Absinthe Spoon
Absinthe Spoon
Traditional sugar cube strainer for watering down absinthe, in the form of an Art Nouveau fairy.



P607 Sucre Vert Absinthe Spoon
Pendant

Green Sugar: a miniature wearable token of a secret life; an Alchemy absinthe spoon, signifying an existence dedicated to hedonistic pleasure and sublime aestheticism; set with large, limpid Emerald green crystal.



Image credit : @gothic_tracery



P503 Queen Of The Night
Necklace

The antipathy of the ancient Iranian prophet sage Zoroaster's 'Moral Order'. A flamboyant Swarovski crystal-laden baroque extravagance representing opulence and decadence.



E414

P792 Affaire du Coeur
Pendant

A dark and Delphic romance of the heart between two strange and exotic creatures. Shown with matching earrings.



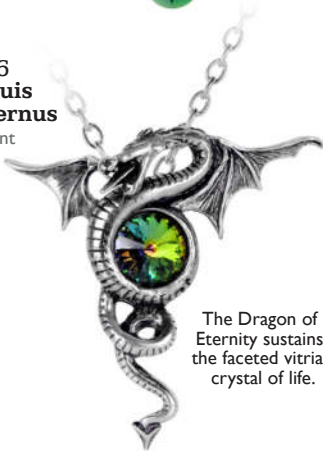
QUEEN OF THE NIGHT

P874
**Tercia
Serpent**
Necklace



This serpent, evincing its three coils, symbolises the pagan Rule of Three; that all energy transmitted into the world by somebody positive or negative, is returned threefold to that same person.

P346
**Anguis
Aeternus**
Pendant



The Dragon of Eternity sustains the faceted vitrial crystal of life.

P844
Færie Glade
Necklace

The ephemeral delicacy of a garden fairy reflecting the short but sweet life of a black rose. With black acrylic rose.



P229
**Wolverine
Moon**
Pendant
Beware the full moon and the silver dagger; with two moonstones.



Model is wearing -
P432 Emerald Venom necklace
R222 Emerald Venom ring

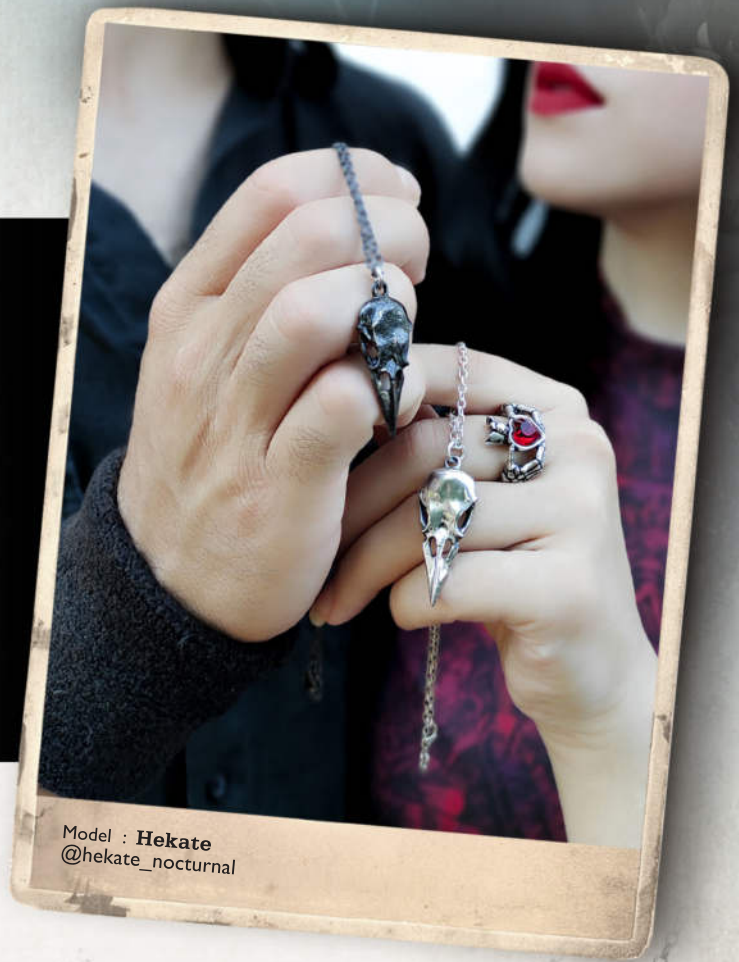
Model : Obsidian Kerttu
facebook.com/ObsidianKerttuOfficial/
Photo : Nevena Mitrovic
instagram.com/nena.mit/

FRIENDSHIP NECKLACES



P834
Coeur Crâne
Couples Raven
Promise Necklace

Two complementing raven's skulls; when together they're a discreet heart of bone - when apart, a covert token of a netherworld affair. Sold as two separate necklaces.



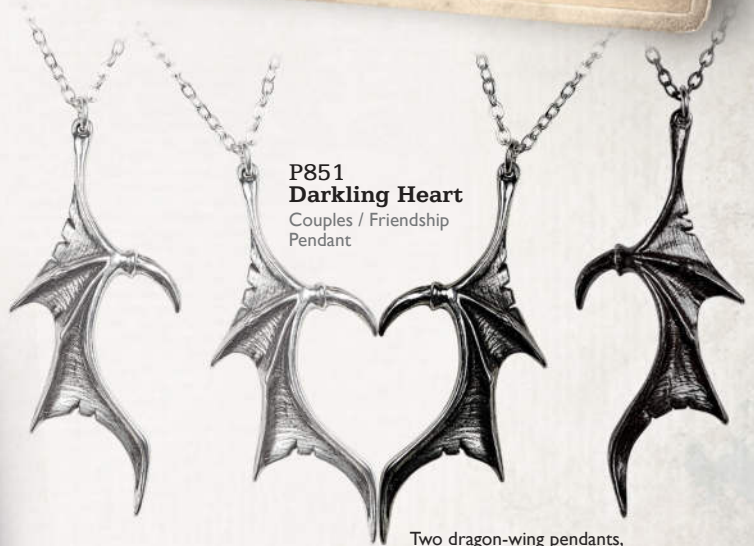
Model : **Hekate**
@hekate_nocturnal



P943
Key To Eternity

Couples / Friendship Necklace

You've never entered this place before - dare you commit yourself? The most beautiful couples necklace featuring a padlock and key design. The key fits into the lock demonstrating your eternal love!



P851
Darkling Heart

Couples / Friendship Pendant

Two dragon-wing pendants, forming a perfect heart frame when held together. In high contrast black & silver finishes.



Model : **Honey Hulala**
@honey_hulala

Model : **Dorian Dane**
@dorian.dane

P811
Draconic Tryst

Sweetheart / Couples / Friendship Necklace

Consorts of darkness collude and entwine with adamantine embrace, to belong to one another for eternity. An interlocking, separable, two-tone double necklace.

Magnetic catch fastening.





P931 ▲
Petite Affair Du Coeur

Pendant
A dark and Delphic romance of the heart; an assignation between two strange and exotic creatures from another place, amorous beneath the stars in the night sky. With red enamel & black crystal dropper.



P932 ▲
Noose Around Your Neck

Pendant
The most common method of execution from Mediaeval times, and a squalid and degrading end to the life of a mere mortal.



P934 ▲
Blacksoul Bijou

Pendant
The black demon heart of a gothic seductress, nocturnally enticing her prey with ravishing enchantment. Antiqued pewter heart with black-enamelled fill and bat wings.



P933 ▲
Marie Antoinette

Pendant
Flaunting the regal finesse of a doomed age. Guillotine blade bearing the last traces of aristocratic life; with fine crystal blood drop.

Model is wearing :
P933 Marie Antoinette pendant
R219 Triple Goddess ring

Model : Dragonfly
[facebook.com/GuiDragonfly](https://www.facebook.com/GuiDragonfly)

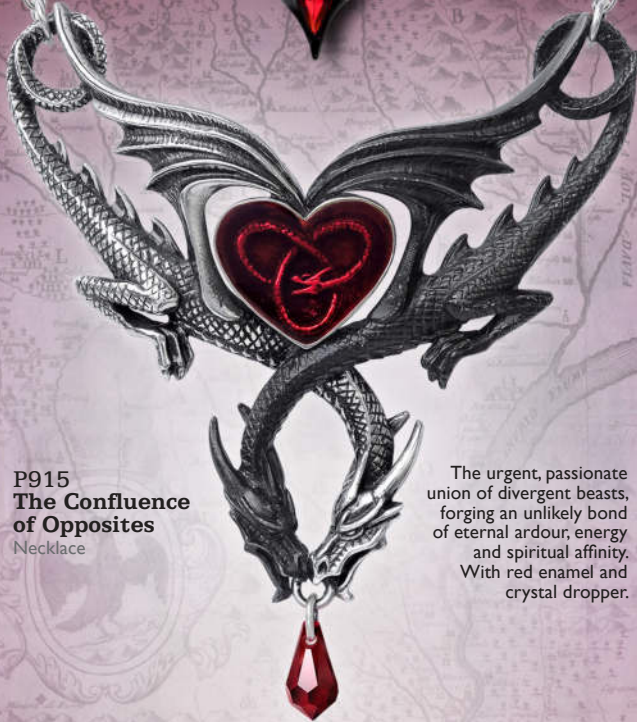
P417
Drakonkreuz
Pendant

Symbol of the obscure, medieval, mystic order and holders of arcane and ancient magical powers; with red crystals.



P915
The Confluence of Opposites
Necklace

The urgent, passionate union of divergent beasts, forging an unlikely bond of eternal ardour, energy and spiritual affinity. With red enamel and crystal dropper.



THE DRAGON'S LURE

P829
Dragon's Lure
Necklace

A twisting saurian familiar, willing it's confidant to a wayward and dissolute lifestyle. On a continuous snake chain, fastened by a magnetic catch under the dragon's head.

See also Dragon's Lure bangle A124 and Ear Wraps.



Magnetic catch fastening used on bangle and necklace



P323
The Whitby Wyrn
Pendant

The legendary North Yorkshire servant of the Antichrist rampant.



P916
Infinity Dragon
Pendant

An underworld creature portraying the concept of infinity.



P801
Santiago Cross
Pendant

The charge of the 12th Century knights, The Order of St. James of the Sword; with hematine cabochon.



P183
Nosferatu's Rest
Pendant

Encapsulated in a smoke glazed pewter coffin, the Prince is viewed in his matinal retreat.

**P917
Flight
of Airus**

Pendant
The distant shape of a
profound wonder. Matching
earrings also available (E442).



**P598
Kiss The Night**

Pendant
Discreetly tokening
the owner's alternative
tendencies.

**P965
Vampyre Knife**

Pendant



An 1830's variant
of the frontiersman's
Bowie fighting knife,
used by vampire
hunters such as
Van Helsing,
throughout central
Europe during The Terror.



**P715
Ruah Vered**

Pendant
The spirit and the 'Breath of Life',
entwined with the romantic and
sensual rose of faithful love. On a
21" trace chain. See also Ruah
Vered earrings E402.



Model is wearing -

E437R Emphyrean Tear Earrings
P915 The Confluence of
Opposites Necklace

Model : **La Esmeralda**
@Alternative.Model.La.Esmeralda

Photo : **Silver Pearl Photography**
www.silverpearlphotography.blogspot.com



**P908 ▲
Mithras**

Pendant
The cult mystery's bull's horns and crescent moon of the Roman underworld.



**P910 ▲
Drakkar Hammer**

Pendant
From the great Viking raiding parties' longships.



**P625 ▲
Dragon Skull**

Pendant
Primitive ferocity unleashed.



**P11 ▲
Double Axe**

Pendant
Barbarian warlord's professional trade tool.



**P338 ▲
Bindrune Hammer**

Pendant
Viking Thor's Hammer, with runes commanding energy, courage, virility and conquest.



**P774 ▲
Jormungand**

Neck Thong
The Norse legend of Jormungand; the 'Midgard' or World Serpent is the greatest ouroboros.



**P918 ▲
Mini Jormungand**

Pendant
A discreetly talismanic ouroboros formed of the legendary Norse Midgard Serpent.



**P774 ▲
Aegishjalmur**

Pendant
The Viking rune stave, a powerful magical, Norse protection amulet.



**P788 ▲
Wolf Macht**

Pendant
The symbol of power from the wolf's fang is understood by all. With black pewter 'tooth'.



**P833 ▲
Dark Wolf**

Pendant
The ferocity emanated by this feral beast is tangible. Antique pewter pendant on a silver curb chain.



**P957 ▲
Journey to Valhalla**

Pendant
The unrelenting courage of the Einherjar warrior, ensures a Valkyrie's escort to the great hall of the slain.



VAP2 ▲
Mjollnir
 Pendant
 Thor's magical war-hammer.



P687 ▲
Helm Of Awe Ravenskull
 Neck Thong
 This raven's skull has been engraved upon its head with the Icelandic stave symbol, 'Aegishjalmur'. On black square leather thong.



P752 ▲
Rabeschadel Kleine
 Pendant
 A token of the great black bird, famous for it's prophetic powers and capable of foretelling death.



P193 ▲
Black Raven
 Pendant
 In two-tone, blackened pewter with polished mount. The Raven, the C. 20th symbol of the undead; on 27" ball chain.



P696 ▲
Thor's Hammer Amulet
 Pendant
 An amulet to Thor, to wear for protection, strength, healing and fertility. On 18" chain.



ALCHEMY
 England · 1971

Model is wearing -

P910 Drakkar Hammer Pendant
 P908 Mithras Pendant
 Model: Dark Wolf
 @Dark.Wolf.Model
 Photo: Les Songs De Lilou
 @Les.Songes.De.Lilou



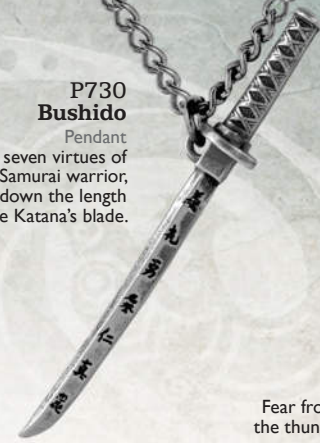
**P618
Osbourne's
Cross**

Pendant
Sign of a priest of
darkness; with black
enamel.



**P898
Volvan
Ravenskull**

Pendant
The morbid media of a Seidr, the
wand-carrier or seer of the Vikings,
consulted on matters of fertility and
battle, even by the gods themselves.



**P730
Bushido**

Pendant
The seven virtues of
the Samurai warrior,
engraved down the length
of the Katana's blade.



**P751
Geistalon**

Pendant
Fear from the darkness
the thundering phantom
of an armoured
cataphract unicorn.



**P296
Reaper's Arms**

Pendant
Harvester of Sorrow
and the badge of fate.



**P617
Black Knight's Cross**

Pendant
Awarded for dastardly deeds;
with trans black enamel, on silver
curb chain.



**P775
Black Star**

Pendant
Supernatural forces leech from
the Stygian pentacle; with black
enamel.



**P850
Einardolk**

Pendant
Viking talisman of self
preservation. Two-tone
pewter with black cabochon
'eye', on silver curb chain.

**P188
Anguistralobe**
Pendant

Working miniature of an C18th
instrument to measure the direct
path of destiny between specified
heavenly bodies; pewter and brass.

ANGUISTRALOBE



**P886
Remains**

Pendant
The, hard, featureless receptacle
of the soul, stripped down from
its mortal vanity.



**P26
The Alchemist**

Pendant
Classic skull of the philosopher;
black rose two-tone pewter.



**ULP9
Tattoo Gun**

Pendant
Fully 3-dimensional 2-tone
tattoo gun. With engraved,
copper-plated scroll on antique
silver finish chain.

ACCESSORIES



**ACWT4
La Fée Verte
Absinthe Spoon**

Absinthe Spoon
Traditional sugar cube
strainer for watering
down absinthe, in the
form of an Art
Nouveau fairy.



**ABR5
Norsebraid Beard
& Hair Beads**
Beard / Hair beads (Set of 3)

The complete Viking warrior's
amuletic tool kit, to incite a
berserker's invincibility.
Set of 3 includes Thor's Hammer,
Raven's Skull and Viking Warrior's
Helmet.



Model is wearing :
HH12 Wild Black Rose hair slide
E347 Bacchanal Rose earrings.

Model : **Dragonfly**
facebook.com/GuiDragonfly



**HH10
Black Raven**

Hair Slide
The Raven - the modern vampire
and 20th century symbol of the
undead; in blackened pewter.

The Borley Relic



**CS21
The Borley Relic
Votive Candle**

Candle Holder
Salvaged from the ashes of Borley
Rectory 'The most haunted house in
England'; twice burnt to the ground
in circumstances most mysterious.
One possessed of second sight
might peer through the window and
catch a glimpse of the tormented
spirits that once haunted the house.

**HH1
Darkling
Bat Slide**

Hair Slide



The classic vampiric bat swoops
spreadeagled towards it's prey.

ALCHEMY



England · 1977



Model is wearing :
E487 Lunatious earrings;
P983 Descending Darkness choker
 Model & photo: @Kattslade

Earrings



E491
Heart of Blackness
 Dropper Earrings (pair)

Is there anything so lovable as the dark and mysterious black rose that refuses to conform to the convention of normality and stands proudest amongst the more delicate flowers!



E488
Lunar Moth

Dropper Earrings (pair)
 This actias, nocturnal and most rare of species, bear markings uncannily akin to the lunation of our influential moon.



E486
Lucrezia's Fix
 Earrings (pair)

The practical woman's discreet solution to a problem 'encounter', as exemplified by the infamously licentious, incestuous and murderous C16 femme fatale, Lucrezia Borgia.



E487
Lunatious
 Dropper Earrings (pair)
 The essence of an unapologetically dark and nocturnal existence.



E490
Churchyard
 Dropper Earrings (pair)
 A curlicue of gothic cusping with Jardine droppers, signifying new beginnings, sorrow and compassion for those gone before and those who are yet to go...



E489
Midnight Memorial
 Dropper Earrings (pair)
 Imagine, wandering alone through the dimly gas lit alleys of Paris at la fin de siecle, following the ghost of Sebastian Melmoth - (Oscar Wilde), hopelessly searching for another chance to impress the world.

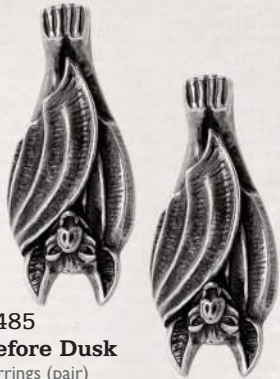


E483
The Trophy
 Earrings (pair)
 A memento from the kill, and a sad and forlorn relic of the hapless victim.



E480
Hex Coffin
 Earrings (pair)
 A shining, tangible spell of protection, defying the reaper and his dark spirits of mortality by the incessant tangle of positively baneful symbology.

E482
Luna Roost
 Earring
 Luna, the goddess and spirit of the moon, rises from the fonte noctis, the source and essence of the night.



E485
Before Dusk
 Earrings (pair)
 The roosting menace will soon be awakened by the setting of the accursed sun, and the time to revel will once again come alive.



E484
Night-Time
 Earrings (pair)
 Take the wings of darkness and veil yourself in a sinister cloak of nocturnal wickedness - let the night be yours...



E481
Howl
 Earring
 A sullen, skulking lone wolf, sensitive to the nuanced force, awaits a full moon for freedom from restraint.



E478
Conspiracy
 Dropper Earrings (pair)
 A dark shadow of movement stirs amongst the tops of the large oaks, as the conspiracy of ravens prepares to descend on the unsuspecting.



E479
The Attic
 Dropper Earrings (pair)
 From total still and silence, suddenly, a rush and a clattering of leathern wings bursts out through the eaves with malice aforesought.

E477
TEARS OF THE MOON

 Earrings (Pair)
 The wax and wane of tidal magic moving unseen through our deepest desires and fears as the Goddess' tears cleave the night asunder.

<p>E477A</p>  <p>THE AMETHYST TEAR Spirituality, Creativity, and Transformation.</p>	<p>E477B</p>  <p>THE DARK TEAR Intuition and the Birth of Aspiration.</p>	<p>E477C</p>  <p>THE WOLF TEAR Connection, Rekindled Friendship and Community.</p>	<p>E477G</p>  <p>THE GREEN TEAR Prosperity, Blessings and Abundance.</p>	<p>E477R</p>  <p>THE HUNTER'S TEAR Fertility, Resilience and Self Preservation.</p>
--	---	--	--	---



**E472 ▲
Black Rose
Droppers**

Dropper Earrings (pair)
A bloom plucked from a devotional
wreath of black roses, symbolising a
dark and mysterious love.



**▲ E470
Nightflight**

Dropper Earrings (pair)
Flying bats, silent and motionless,
await the final vestige of light -
so, the raptors may play...



Model is wearing :

P955 Baroque Rose necklace;
E472 Black Rose Droppers earrings

Model & photo: @Vesmedinia



**E466 ▲
Desire Moi**

Dropper Earrings (pair)
Never underestimate the
irresistible potency of
Cupid's arrow. ‡
Matches P926 Desire Moi
necklace.



**E471 ▲
Planchette**

Dropper Earrings (pair)
Let the whispering voices from
the Ouija guide you through
your mortal existence.
Matches P937 Crowley's Spirit
Board necklace.



**▲ E474
Wiccan Moon**

Dropper Earrings (pair)
The pearly full moon,
invoking healing, occult
protection and wealth. ‡
Set with Mother-Of-Pearl
moonstones.



**▲ E473
Rabenschadel
Schlenker**

Dropper Earrings (pair)
A token of the great black bird,
famous for it's prophetic powers
and capable of foretelling death.



E428B

Black Widow

Dropper Earrings (pair)

The deadly, predatory pair are quiescent, unnervingly poised to sink their fangs into any convenient and desirable prey.



E476

Priestess of Ishtar

Dropper Earrings (pair)

Venus, the star of Ishtar, is central to the firmament, as the Semitic Queen of Heaven, almighty goddess of the inseparable forces of love, sex, fertility and war.



E475

Danu

Dropper Earrings (pair)

Mother of the earth and of all the gods! Matriarch to the legendary Celtic pantheon, the Tuatha De Danann, Danu is goddess of fertility and wisdom.



E469

Lilith Earrings

Dropper Earrings (pair)

Eve, the ultimate, emancipated female of Biblical and Babylonian mythology, feared by all misogynists as the primal she-devil.



E467

Pagan

Dream Catcher

Dropper Earrings (pair)

Raven spirit and great protector shedding but a single feather to float beneath a weightless moon. To ward off whispered evil on the cusp of midnight, ensnared below in a web of dreams.



E460

Eve's Triquetra

Dropper Earrings (pair)

The triple goddess, with a touch of female wilfulness.



E459

A Night With Goethe

Dropper Earrings (pair)

Nocturnal stirrings, returning in search of a lost lover.



E458

A Pact With A Prince

Dropper Earrings (pair)

A fusion of magical sigils to invoke the powers of the moon and angels of dark desire.

Model is wearing -
 E414 Affaire du Coeur earring droppers
 Model: **Mahafsoun**
 facebook.com/MahafsounArt



E414
Affaire du Coeur
 Dropper Earrings (pair)
 The flanking skulls betray a dark and Delphic romance. †💎
 With translucent deep blue enamel & Austrian jet crystals.



E457
Cauchemar
 Stud Earrings (pair)
 Nightmare - a soul eclipsed by the powers of darkness.



E450
Pumpkin Skull
 Stud Earrings (pair)
 Born from ancient Irish origin. The carved demonic face to frighten away evil spirits.



E449
Baphomet Studs
 Stud Earrings (pair)
 Inspired by Eliphas Levi's portrait of the goat-headed deity, and the reason for the Knights Templar's downfall.



E462
Coeur Crane
 Dropper Earrings (pair)
 The ancient bird of legend with beak that points the way to the immortal afterlife, though we all must first pass through the portal of the grave.

E464
Gothic Devotion Crosses
 Dropper Earrings (pair)
 One of the most potent and widely used amulets in the world, the cross, here in the form of the Apostle's Cross, used everywhere in High Church Christian devotion.



E437C
Empyrean Tear
 Dropper Earrings (pair)
 Tears of grief from the eye of God, shed for humanity as He looks down upon us from the Heavens.
 Available in Crystal AB (E437C), Jet (E437B) or Siam (E437R) Austrian crystals. †💎



E437B



E437R



E463
Wings Of Midnight
 Dropper Earrings (pair)
 Taking flight from a subterranean lair, to whisper blessings on a phantom zephyr. So gracing the chosen ones of the dark goddess, with the wings of midnight. Black pewter.



**E443
Blacksoul Droppers**
Dropper Earrings (pair)
The black demon heart of a gothic seductress.



**E440
Jormungand**
Dropper Earrings (pair)
The discreetly talismanic ouroboris, emblems of wholeness, formed of the legendary Norse Midgard Serpent.



**E442
Flight of Airus**
Dropper Earrings (pair)
The distant shape of a profound wonder.



**E441
Tercia Serpent**
Dropper Earrings (pair)
Symbolising the wiccan rule of three. † ♡



**E425
Love Bats**
Dropper Earrings (pair)
Gothic amour from the night time's darkest creatures. † ♡



**E433
Witches Heart**
Stud Earrings (pair)
Stick the heart and cast a spell for silent retribution. With chained pin.



**E431
Sterne Leben**
Dropper Earrings (pair)
Stars of Life in gothic form, to shine in celestial darkness. With Austrian Jet crystals. † ♡



**E432
RIP Rose**
Dropper Earrings (pair)
Dark and deadly passion from beyond the grave.



**E430
Goddess**
Dropper Earrings (pair)
The Triple Goddess of Wicca is represented with the elemental, full moon pentagram at its heart.



**E421
The Romance Of The Black Rose**
Dropper Earrings (pair)
An impossible dream...



**E429
Kiss The Night**
Dropper Earrings (pair)
Silent nocturnal sentinels, ever present at your side.



**E428
Emerald Venom**
Dropper Earrings (pair)
The predatory pair, poised to sink their fangs. † ♡



**ULFE22
Devil Heart**

Stud Earrings (pair)
Love, is sinful, naughty and oh,
so much fun! With translucent
red enamelled heart & Austrian
crystal highlights. ‡ ✦



**E378
Hand Of Macbeth**

Dropper Earrings (pair)
Beware the seduction of ultimate
power... With Austrian jet
hematite crystals. ‡ ✦



**E333
Black Raven**

Dropper Earrings (pair)
Dark and sultry companions
make sure your admirers do not
underestimate your character.



**E364
Deadskull**

Dropper Earrings (pair)
The desiccated remains of a
former human being; pewter
skulls suspended by fine chain.



**E365
Wounded Love**

Stud Earrings (pair)
A gaping hole is left where there
was once a dark and mysterious
romance; black pewter rose stud
with heart dropper.



**E9
Skeleton**

Dropper Earrings (pair)
It all comes down to this. The last
remains of master and slave alike.



**E373
Awaiting
The Eventide**

Dropper Earrings (pair)
Roosting vamps, silent and
motionless, await the final vestige
of light - so, the raptors may play...



**E372
Ankh Of Osiris**

Dropper Earrings (pair)
The Egyptian god Osiris, bequeaths
the 'Breath Of Life' upon those to
be blessed with immortality. ‡ ✦



**E403
The Sophia Serpent**

Stud Earrings (pair)
The Ouroboros, ancient Gnostic
symbol of eternity, rebirth and unity.
Set with Austrian crystal eyes. ‡ ✦



**E310
Marie Antoinette**

Stud Earrings (pair)
Miniature guillotine blades, bearing
the last traces of aristocratic life;
with Austrian Siam crystals. ‡ ✦



E402
Ruah Vered

Dropper Earrings (pair)
The spirit and the 'Breath of Life',
entwined with the romantic and
sensual rose of faithful love.



E396
Ouija Planchette

Stud Earrings (pair)
The spiritualist's device for
communicating with the dead...
ICU! Set with a realistic
taxidermal eye.



E395
Black Star

Dropper Earrings (pair)
Supernatural forces leech
from the Stygian pentacle.



Model is wearing -
E395 Black Star dropper earrings
P715 Ruah Vered pendant
P775 Black Star pendant

Model : **Obsidian Kerttu**
facebook.com/ObsidianKerttuOfficial/
Photo : **Nevena Mitrovic**
instagram.com/nena.mit/

EAR-WRAPS



E410
Wild Black Rose
 Stud Ear-Wrap (left)
 The rose of black romance
 will entrap its hearts
 desire and seduce them.
 With large black
 acrylic rose.



E436
Jormungandr
 Ear-Wrap (left)
 The Norse legend of Jormungandr,
 the 'Midgard' or World Serpent
 is the greatest ouroboros...
 unfurled.

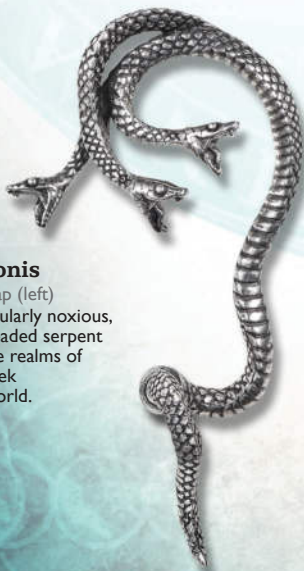
E355
Raven Ear-Wing

Stud Ear-Wrap (left)
 Ready to impart its supernatural
 intelligence to its master,
 the black raven raffishly embraces the ear
 of its owner. Fastened by a surgical
 steel ear-post.



Model is wearing :
 E355 Raven Ear-Wing ear wrap
 Model : **Mahafsoun**
[facebook.com/MahafsounArt](https://www.facebook.com/MahafsounArt)

E434
Khthonis
 Ear-Wrap (left)
 A particularly noxious,
 multi-headed serpent
 from the realms of
 the Greek
 underworld.



E376
A Night With Goethe
 Stud Ear-Wrap (left)
 Nocturnal stirrings, returning from
 the grave in search of a lost lover,
 the creature roams.





ARBOREUS

ELF EAR WRAPS

◀ E390R & E390L Arboreus

Stud Ear-Wrap (right & left)
An elf's ear of swirling, Victorian,
verdant flourishes. Available in
both right & left ear versions.

Model is wearing : E390R Arboreus Ear Wrap

Model : **Melanie K**
instagram.com/frankensteins_cat/

Photo : **Travis Lilley**
instagram.com/travislilleyphoto/



ELVYH

ELF EAR WRAPS

The quintessential manifestation of
one of the most magical and ancient
of beings. † ✧

E446 R
Black Ear-Wrap
Right



THE DRAGON'S LURE

1 E274R

The Dragon's Lure

Faux Stretcher Ear-Wrap (right)
Like a whispering shoulder devil,
or a witch's familiar, this dragon,
piercing through the earlobe,
tempts the wearer into acts of
shameful depravity.

2 E274B

Dragon's Lure Black

Faux Stretcher Ear-Wrap (right)
Noir version of the now
immortal dragon wrap.

3 E274L

Dragon's Lure Left

Faux Stretcher Ear-Wrap (left)
A matching, left-ear version
of the infamous dragon
wrap.

1
E274R

2
E274B

3
E274L

CUFF STUDS



E381 ▼
Thor Donner
 Cuff Stud Earring (single)
 A Norsemen's miniature
 Thor's hammer and 'thunder'
 rune-cuff.



E382
Rosa Nocta
 Cuff Stud Earring (single)
 Conjuring the amorous
 magical properties of a
 combined pentagram and
 a black rose.



E349 ▶
**Uncle Albert's
 Timepiece**
 Cuff Stud Earring (single)
 The perfect miniature, 13-hour
 Lunar time fob watch and its
 accoutrements from the Victorian
 era; two-tone copper & pewter
 with glass imitation watch face.



FAUX EAR STRETCHERS

E280 ▶
Impalare Cross
 Faux Stretcher (single)
 Pierced by the enduring symbol
 of sacrifice; black-enamelled
 cross piercing the earlobe, with
 surgical steel post.



E320 ▲
Tomb Skull Horn
 Faux Stretcher (single)
 7mm curved horn with plain
 skull end.

SINGLE EARRINGS

E256
Hang Man's Noose
 Single Stud Earring
 The most squalid and degrading
 of ends to the life of a mortal.



E357 ▶
Bushido
 Single Dropper
 The seven virtues of the samurai
 warrior, engraved down the
 length of the katana's blade.



STUD PAIRS



**E447 ▲
Ring O' Roses**
Stud Earrings (pair)
Symbolising a dark
and mysterious love.



**E342 ▲
Mortuarium**
Stud Earrings (pair)
Skulls, staring deeply into the
oblivion of a long-past mortal
existence.



**E444 ▲
Blacksoul Studs**
Earrings Studs (pair)
The black demon heart
of a gothic seductress.



**E394 ▲
Viennese Nights**
Stud Earrings (pair)
Creatures of the night in Europe's
fabulous den of iniquity. ‡ ♡



**E422 ▲
Demoneye**
Stud Earrings (pair)
The creature from which
these ocular sensors belong
is not to be crossed.



**E353 ▲
Industrilobe**
Stud Earrings (Pair)
The quintessential cogwheel,
personifying dynamic industrial
and intellectual progress.



**E164 ▲
Pentagram Studs**
Stud Earrings (pair)
Miniature pentagrams for
magical discretion.



**E339 ▲
Black Rose Studs**
Stud Earrings (pair)
The alchemical mystery personified
by this impossibly rare flower.



**E186 ▲
Batstuds**
Stud Earrings (pair)
Discreet aural accents
for the nocturnal hunter.



**E359 ▲
Rabeschadel**
Stud Earrings (pair)
The great black bird, famous
for its prophetic powers, being
Odin's messengers and capable
of foretelling death.



**E384 ▲
Thor Hammer Studs**
Stud Earrings (pair)
A Norseman jewel-smith's
precision, miniature Thor's
hammer.



**E406 ▲
Sacred Cat**
Stud Earrings (pair)
A likeness of the Egyptian black
cat warrior and protectress. ‡ ♡



**E76 ▲
Death Studs**
Stud Earrings (pair)
Miniature pewter skull studs,
for the discreet fatalist.

Kings



R255
Mrs. Mothersole's Curse

Ring
Infamously chronicled by the great MR James in 1904 in 'The Ash Tree', here is a spatial rendition, taken from his own vivid description as a first hand witness, of the demented, malevolent creatures seen streaming from the blazing tree trunk; the source of the witch trials' legacy.
Adjustable Sizes :N/L - T/Q - Y/W



R254
Lunatious

Ring
Luna, the goddess and spirit of the moon, rises from the fonte noctis, the source and essence of the night.
Adjustable Sizes :N/L - T/Q - Y/W



R253
The Awakening

Ring
Dragons, as is well chronicled, often have a tendency to lie dormant, gigantic, unrecognised and smouldering as a volcano with repressed violence, awaiting the fateful day when a maiden, pure in spirit is brought forth in sacrifice and a heathen prophecy of all consuming fire is fulfilled.
Adjustable Sizes :N/L - T/Q - Y/W



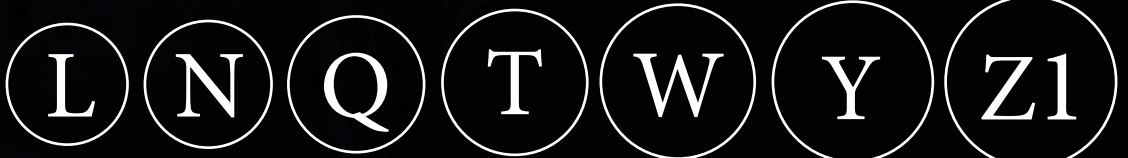
INTERNATIONAL SIZE GUIDE

English:	L	N	Q	T	W	Y	Z1
American:	6	7	8½	9½	11	12	13
European:	12	15	18½	21	23	27	28
German:	1.7	1.8	1.9	2.0	2.1	2.2	2.3
Japanese:	10	13	16	19	23	25	27

Alchemy's rings are available in various sizes. The sizes stated are intended as a guide only, and are **NOT** always strictly accurate.

DIAMETER RING GAUGE

To gauge your ring size using the circular guide, place a suitably sized existing ring over the size indicators here and choose the closest size to the inner circle.



LINEAR RING GAUGE

To gauge your ring size using the linear guide, wrap a 5mm wide X 10cm long (approx.) strip of paper around the required finger and mark the point of overlap with a pencil. Then lay flat against this linear guide.

Z1 Y W T Q N L



Model is wearing :

- P976 Churchyard necklace
- A143 Churchyard bracelet
- R252 Fafnir ring
- R234 Goddess ring
- R241 Wild Black Rose ring

Model & Photo : @Katts;ade



**R252
Fafnir**

Ring
Breaking out through the coastal mists would be seen this terrifying dragon's head, high on the prow of a Viking longship, searing the destiny of the onlooker into their eyes.
Adjustable Sizes :N/L - T/Q - Y/W



**R251
Resurrected**

Ring
The reanimated skeletal remains of a damned soul, sliding back up from the depths of the grave.
Adjustable Sizes :N/L - T/Q - Y/W



**R222B
Black Widow**

Ring
The monstrous, deadly predator is quiescent, unnervingly poised to strike and sink its fangs in whatever may sate its desire.

A giant spider, black pewter ring with a large red Austrian crystal body. Matching necklace and earrings available.
Sizes : L, N, Q, T



**R250
Made Of The Night**

Ring
C16 term to describe a person of dark and sinister nature. One that might be associated with the dread and fear instilled by the ghastly raven.
Adjustable Sizes :N/L - T/Q - Y/W



**R249
Le Chat Noir**

Ring
Sinuous muse of La Belle Epoque stalking the rooftops and alleys of Bohemian Montmartre at the zenith of its decadent glory.
Adjustable Sizes :N/L - T/Q - Y/W



**R248
Devil Heart**

Ring
Play with the dark Devil... Love is sinful, naughty and oh, so much fun!
Adjustable Sizes :N/L - T/Q - Y/W



**R247
Howl at the Moon**

Ring
A ravenous, voracious beast of unstoppable force, pleading succour from their overpowering master.
Adjustable Sizes :N/L - T/Q - Y/W



**R246
Nighthawk**

Ring
A sinister, vampiric creature, thirsting for unsuspecting prey to carelessly cross their path.
Adjustable Sizes :N/L - T/Q - Y/W



**R242
Battle Ring**

Ring
The show of prowess for a battle won.
Adjustable Sizes :T/Q - Y/W



**R243
Last Embrace**

Ring
Fond memories of a once warm intimacy.
Adjustable Sizes :N/L - T/Q - Y/W



**R241
Wild Black Rose**

Ring
The rose of black romance will entrap its heart's desire and seduce them.
Adjustable Sizes :N/L - T/Q



**R245
Dragon's Lure**

Ring
Like a whispering shoulder devil or a witches familiar, this tortuous personal miniature dragon coils itself around your finger.
Adjustable Sizes :N/L - T/Q - Y/W



**R244
A Night With Goethe**

Ring
Nocturnal stirrings, returning from the grave in search of a lost lover, the creature roams.
Adjustable Sizes :N/L - T/Q - Y/W



**R239
Baphomet**

Ring
Inspired by Éliphas Lévi's portrait of the goat-headed deity, and the reason for the Knights Templar's downfall.
(Sizes : N, Q, T, W, Y)



**R240
Blacksoul**

Ring
The black demon heart of a gothic seductress.
(Sizes : L, N, Q, T, W)



**R234
Goddess**

Ring
The Triple Goddess of Wicca is represented with the elemental full moon pentagram at its heart.
(Sizes : L, N, Q, T)



**R235
RIP Rose**

Ring
Dark and deadly passion from beyond the grave.
(Sizes : L, N, Q, T)



**R236
Voodoo Doll**

Ring
The traditional Folk Magic method of destroying a witch's power, or cursing a rancorous foe. With chained removable pin. (Sizes : N, Q, T, W)



**R237
Token Of Love**

Ring
A dark and mystical love stays hidden within this token ring.
(Sizes : L, N, Q, T)



**R238
Little Devil**

Ring
The heart of The Devil, to signify your love of the wicked! The red enamel heart is bounded by a pair of Austrian crystals. (Sizes : L, N, Q, T) †



**R232
Ravenette**

Ring
The darkened quietude of sorrow. (Sizes : L, N, Q, T)



**R228
Psalm 68**

Ring
"Let God arise and His enemies be scattered"; the serpent of the underworld. Set with Emerald Austrian teardrop crystal.
Adjustable Sizes:
L - N, (Small), Q - T, (Med) †



**R223
Bacchanal Rose**

Ring
A romantic motif concealing a secret libertine passion. Set with two Austrian crystals and black acrylic rose.
(Sizes : L, N, Q, T) †



**R216
Stealth**

Ring
Under the cloak of night, the bat crawls towards its intended prey.
(Sizes : N, Q, T, W, Y)



**R224
Bastet Goddess**

Ring
The perfect feline fantasy; the Egyptian cat warrior goddess of sexuality and the moon. With Austrian crystal eyes.
(Sizes : L, N, Q, T) †



**R222
Emerald Venom**

Ring
The deadly predator is quiescent, poised to strike when it may sate its desire. With Austrian Olivine crystal body. (Sizes : L, N, Q, T) †



**R219
Triple Goddess**

Ring
The pearly full moon between waxing and waning crescents, invoking healing, occult protection and wealth. With mother-of-pearl cabochon. (Sizes : L, N, Q, T) †



R6
Death Ring
Ring
The famous blank, stark expression of the face of death.
(Sizes: N, Q, T, W, Y)



R210
Claddagh By Night
Ring
Love, Friendship and Loyalty vouchsafed from the underworld; with Siam Austrian heart crystal.
(Sizes: L, N, Q, T) ‡ ✦



R212
Demon Black & Angel White
Promise Ring
On each ring are inscribed seven magical signatures; one of angels, the other of 'demons'. Summon the assistance of the spirits!
Unique split ring in contrasting light & dark finishes. (Sizes: N, Q, T, W)



R221
Kraken
Ring
Evil from the deep, tightening its grip about your finger.
(Sizes: N, Q, T, W)



R215
Ouija Eye
Ring
Seeing into the past, the present and the future with the unsettling guidance of the spirit board.
(Sizes: Q, T, W)



R134
Betrothal
Ring
A miniature rococo masterpiece of romantic metaphor, with the blood red enamelled heart of passion. (Sizes: L, N, Q, T)



R173
Runeband
Ring
Nordic runes recite the mantra, 'Poetry is in Battle'.
(Sizes: Q, T, W, Y, Z, I)



R195
Viking Virility Runering
Ring
The two bindrunes are made from Uruz and Teiwaz, for the fighting strength of a warrior; and Inguz and Gebo for a virile union and partnership. (Sizes: W, Y)



R71
Agla
Ring
Five magical talismans of profit and protection. The central Kabbalistic sigillum "Agla", stands for 'Thou art mighty forever O Lord', with the remaining four seals for love, memory, safety and peace. (Sizes: N, Q, T, W)



R220
Rabeschadel Kleiner
Ring
The sinister black bird, famous as Odin's messengers and for their prophetic powers and foretelling death.
(Sizes: L, N, Q, T, W, Y)



R183
Vis Viva
Ring
The living power; overwhelming energy and the force of life encircles and liberates the wearer; with Austrian crystals. ‡ ✦
Adjustable Sizes: Small (L - N), Med (Q - T) & Large (W - Y)



R206
The Sophia Serpent
Ring
The Ouroboros, ancient Gnostic symbol of eternity, rebirth and the unity of everything, representing the sun and soul of the world.
(Sizes: L, N, Q, T, W, Y) ‡ ✦

ARMWEAR



A138 ▲
Baphomet

Wrist-Strap

Éliphas Lévi's portrait of the goat-headed deity, and the reason for the Knights Templar's downfall. On adjustable leather strap.



◀ A102
Gears of Aiwass

Wrist-Strap

Aleister Crowley's incorporeal intelligence and dictator of his transcribed and ultra-complex, sacred text, 'The Book of the Law'. On adjustable leather strap.



◀ ULA1
Ace Of Dead Spades

Wrist-Strap

Italian leather wriststrap with pewter & black-enamelled ace of spades plate, including raised, sculpted death's head. On adjustable leather strap.



A98 ▲
Thunderhammer

Wrist-Strap

The Norse god Thor's mighty weapon of utter destruction, Mjolnir. On adjustable leather strap.

A109 ►
Black Consort
Wriststrap

The majestic raven, wings outstretched, gliding alongside its adopted squire offering protection and guidance.
On adjustable leather strap.



A105 ▲
Rabeschadel Wriststrap
Wriststrap

The great black bird is famous for its prophetic powers, being Odin's messengers and capable of foretelling death.
On adjustable leather strap.



A111 ▲►
Desmodus
Wriststrap

The metaphor to capture that dark and dangerous creature that stalks the night. One size Adj.



Model is wearing -
R220 Rabeschadel Kleiner ring
A109 Black Consort wriststrap
Model : **Mahafsoun**
[facebook.com/MahafsounArt](https://www.facebook.com/MahafsounArt)

BLACK CONSORT



A78 Elizabethan

Bangle
Robert Dudley's original design for the tracery molding above the North entrance to Kenilworth Castle for his great love, alas, never used; with Austrian crystal hearts. One size Adjustable.

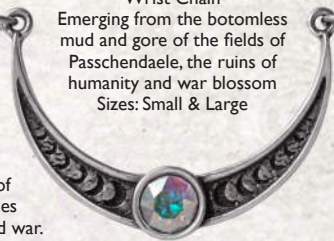


A103 No Man's Land

Wrist Chain
Emerging from the bottomless mud and gore of the fields of Passchendaele, the ruins of humanity and war blossom
Sizes: Small & Large

A140 Priestess of Ishtar

Bracelet (Size adjustable)
Almighty goddess of the inseparable forces of love, sex, fertility, and war.



A141 Blacksoul

Bracelet (Size adjustable)
The black demon heart of a gothic seductress.



A142 Gothic Bat

Bracelet (Size adjustable)
Creature of the night in full flight.



A135 Worshipping Bastet

Bracelet
A triple goddess shrine to the Egyptian warrior cat and protectress, bringer of joy and goddess of sexuality. With Austrian Siam crystal eyes.

A145 Betrothal

Bracelet (Size Adjustable)
The gentle grip felt around a fragile wrist induces an amorous fervour, with this rococo masterpiece of romantic tokenism and its blood red enamelled heart of passion.



A144 Hex Coffin

Bracelet (Size adjustable)
A shining, tangible spell of protection, defying the reaper and his dark spirit of mortality by the incessant tangle of positively baneful symbology.



A143 Churchyard

Bracelet (Size adjustable)
An ivy strangled gothic cusping signifying sorrow and affection for those gone before, and those who are yet to go...





Model is wearing -
 E403 The Sophia Serpent earrings
 P801 Santiago Cross pendant
 A121 The Sophia Serpent bangle

Model : **La Esmeralda**
 @Alternative.Model.La.Esmeralda

Photo : **Silver Pearl Photography**
www.silverpearlphotography.blogspot.com



E403

A121
The Sophia Serpent
 Bracelet

The Ouroboros, ancient Gnostic symbol of eternity, rebirth and the unity of everything, representing the sun and soul of the world.
 Sizes : Large.



A125
Wild Black Rose
 Hinged Bracelet

A trinity of jet-coloured blooms -a portent of love from the shadows.
 With magnetic fastening & safety chain. Sizes: S/M & M/L.



A29
Vertebrae
 Hinged Bangle

The metallised spine of a vanquished predator, forms this hinged, articulated bangle; with safety chain. Size: Medium Adjustable.



A124
Dragon's Lure
 Hinged Bangle

The lacertilian seducer wraps around your wrist to impel a new direction upon your will. A hinged bracelet securely fastened with a magnetic catch and a brass safety chain.
 Size: Small (approx 7", 178mm inner circumference)

ALCHEMY®

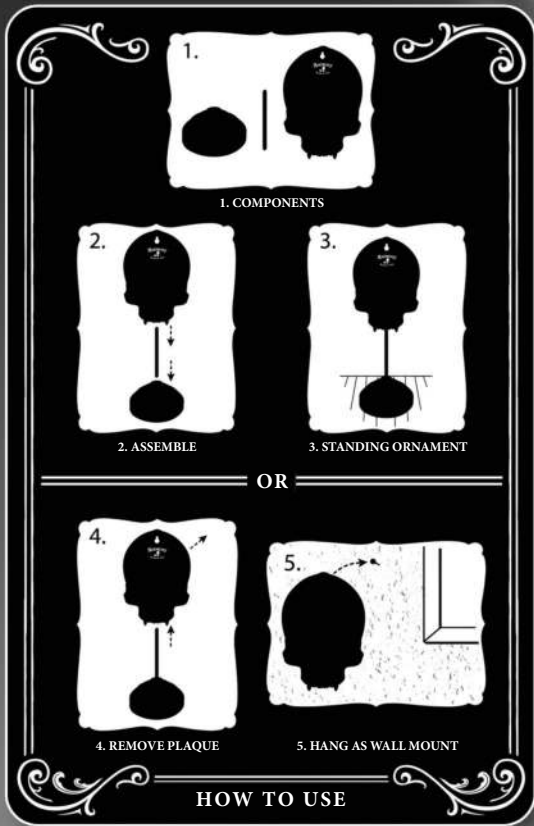
England · 1977

HOME & GIFT COLLECTION

ORNAMENT & WALL DECORATIONS



Transform your living space with our exclusive Alchemy Ornaments & Wall Mounts. Crafted from high-quality resin and meticulously hand-painted, these unique artworks are designed to be multifunctional. Display them proudly on their stands, like trophies of your unique taste, or our resin artworks can easily be removed from their stands and hung on your wall, allowing you to create a gallery-like atmosphere in your home.



**V121
Voodoo Skull**

Ornament

Bearing the Loa symbol of Papa Legba - gatekeeper to the spirit world. He is a lwa of the crossroads, and offerings should be made to him there, where the spiritual and material worlds intersect.

Approx. 25.5cm high.



**V132
Sacred Cat**
Ornament



**V131
Phul Moon Bat**
Ornament



**V130
Blood Auctor**
Ornament



**V129
Mystic Moon Cat**
Ornament



**V128
Dioscuri**
Ornament



**V127
Baphomet**
Ornament



**V126
Ossa Ravenhead**
Ornament



**V125
Cult of Canaan**
Ornament



**V124
Alchemist Askance**
Ornament



**V123
Alchemist Rex**
Ornament



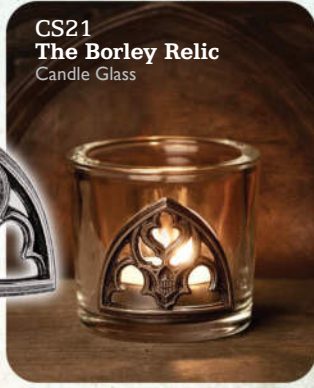
**V122
Nevermore Skull**
Ornament

CANDLE HOLDERS

**SA23
Death Rattle**
Candle Holder
A snake-shaped resin candlestick with an antique gold finish.



**CS21
The Borley Relic**
Candle Glass



Salvaged from the ashes of Borley Rectory, 'The most haunted house in England'. Twice burnt to the ground in circumstances most mysterious.

**SA22B
Baroque**
Candle Holder
An ornate resin candlestick with a matt black finish.



**SA22
Baroque**
Candle Holder
An ornate resin candlestick with an antique gold finish.



HAND & WALL MIRRORS

**V120
Raven's Gaze**
Hand Mirror



Look beyond the surface to perceive that which lies beneath. The dark sentinel guides your mind to wander through the dark places of the soul. A long lost treasure from the House of Usher.

**V119
Raven's Gaze**
Wall Mirror



STORAGE JARS



**JAR2
Curses, Tricks & Spells**
Storage Jars

**JAR1
Witch's Spice Rack**
Storage Jars

Every witch must be fully prepared when summoning their supernatural sagacity. Each jar features a secret name that reflects a potential purpose: Curses = Coffee, Tricks = Tea, and Spells = Sugar. These versatile jars can be used for anything from storing pasta and rice to organizing your beauty essentials like cotton pads and brushes.

Elevate your magical practice with our enchanting Witch's Spice Rack, designed specifically for witches to keep all their spell ingredients safe and organised. This beautifully crafted spice rack features a collection of jars, each accompanied by its own label to personalise and identify your magical ingredients with ease.

Each set includes 3 self-adhesive labels.

GLASS LED LIGHTS



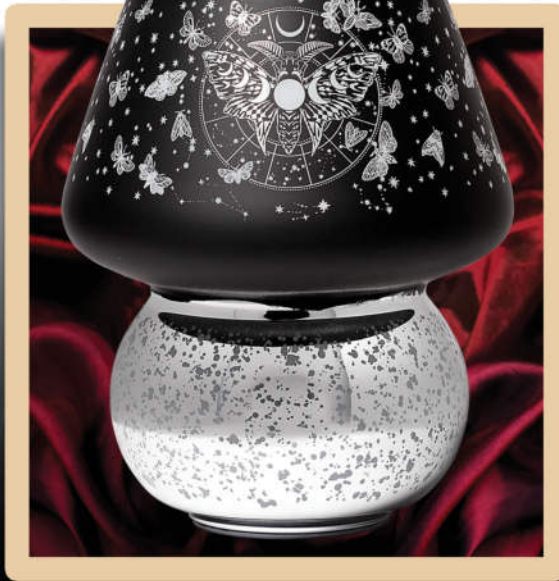
Uses 3x AAA Batteries.
Batteries are not included.

LED9
Mycelia Dreams
top view



LED8
Small Luna
Moth Lamp

LED Light
This actias, nocturnal and most rare of species, bear markings uncannily akin to the lunation of our influential moon.



LED7
Large Luna Moth Lamp

LED Light
This actias, nocturnal and most rare of species, bear markings uncannily akin to the lunation of our influential moon.



LED9
Mycelia Dreams

LED Light
Ancient magic is afoot, so join the widdershins jig and live the mycelia dream.



LED10
Poison Flame Lamp

LED Light
Is it really Poison? Would you dare to take a sip?

GLOBE & LANTERN LED LIGHTS



AA battery operated glass lamp.
Uses 3xAA Battery.
Batteries are not included.



LED1
Angels & Demons
LED Globe Light



LED3
Pagan Calendar
LED Globe Light

LED2
Alchemy Astrology
LED Globe Light

LED4
Count Magistus
LED Lantern



LED5
Witch by Moonlight
LED Lantern



LED6
Poe's Raven
LED Lantern



MUGS



ALMUG28 Saint/Sinner

Mug with Heart Handle
Are you feeling angelic or a little mischievous today?
With the Saint or Sinner Cat Mug, you don't have to
choose just one side!



ALMUG25 Poe's Raven

Mug & Spoon set
Edgar Allan Poe's immortal sentinel calls out
its tragic refrain.



ALMUG27 Witch

Mug with Heart Handle
When the moon rises and the stars awaken, the
Midnight Witch takes to the skies, gliding through
twilight winds on her faithful broomstick.



ALMUG26 Poison

Mug & Spoon set
Each sip is a spell, each stir a choice, is it poison...
or just the taste of power? Drink if you dare!



GARDEN SETS

GG51 Midnight Garden - Bat

Garden Gift set
Unleash your dark green thumb
with this Gothic Garden Gift Set
from the original Alchemy Home
& Gift collection.

GG52 Midnight Garden - Cat

Garden Gift set
Add a touch of feline magic to
your gardening with the
Black Cat & Moon
Garden Gift Set.



STEMLESS GLASSES



Black Glass. Approx. Capacity 540ml.



SG1
Purrfect Brew
Stemless Glass



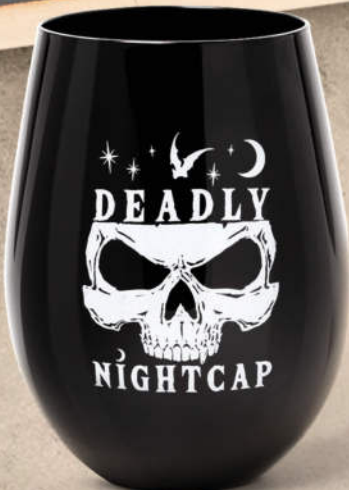
SG5
Magic Elixir
Stemless Glass



SG4
Witching Hour
Stemless Glass



SG7
Favourite Spirit
Stemless Glass



SG6
Deadly Nightcap
Stemless Glass



SG8
Tipple Moon
Stemless Glass



SG3
Witches Brew
Stemless Glass

100% COTTON RUGS

RUGS

SIZE: 50 X 80 cm



RUG4 ▲ Poe's Raven

Cotton Rug

O pallid dome of long dead author,
what dark mysteries lie with in ?
Now but a perch for a beguiling raven,
a cry of 'Nevermore' to summon it's kin.
Edgar Allan Poe's immortal sentinel calls
out it's tragic refrain.



RUG3 ▲ Magic Carpet

Cotton Rug

Ideal for the ceremonial altar or sacred place where
your spell weaving will be enhanced by a magical circle
encompassing elemental rulers, sabbats and feasts which
conjoin to turn the wiccan wheel of time.



RUG2 ▲ Triple Moon

Cotton Rug

Maiden, mother and crone
symbolised as the lunar goddess waxing
and waning through the tides of time, as
the enigma of the elemental pentacle
beckons you to practice the craft.

RUG1 ► Purrfect

Cotton Rug

As any witch worth their
potions know, hearth and
home are not complete
without a magical black cat
to bless and protect your
dwelling. Welcome your favoured feline
familiar over the threshold with the
reassurance of a fine rug by the fire.



ALCHEMY
England · 1971

SCENTED CANDLE GOBLETS



SCJ10 ▲

Moon Tides - Black Cedar

Scented Candle Goblet

The eternal ebb and flow of lunar purification from the spice of ancient Sumeria.

Bringing balance, rebirth and banishing negative energy.

SCJ11 ▲

Angels & Demons - Amber Leather

Scented Candle Goblet

Divining the path of truth & wisdom as warm, healing aromas bring the calming clarity of inner sight to meditate on the ancient mystery,

'As above, so below'.

SCJ14 ▲

Elements - Sage & Jasmine

Scented Candle Goblet

The scent of spiritual cleansing from earth, air, fire and water. Invoking peace, wisdom and creativity.

PUMPKIN CANDLES



SCJ13 ▲

Pumpkin Spice Candle (Large)

Scented Candle Jar

As night draws in and shadows loom, warming Jack-o-lantern aromas bring comfort to ward off unwanted spirits and bless hearth and home.

SCJ12 ▲

Pumpkin Spice Candle (Small)

Scented Candle Jar

As night draws in and shadows loom, warming Jack-o-lantern aromas bring comfort to ward off unwanted spirits and bless hearth and home.

CANDLESTICKS



V115
Ulula Noctis
Candlestick

▶ V114

Vespertilio

Bat Candlestick

Silent sentinel delighting in night. Flying on the border between one world and the next. Be it bird or beast at dusk or dawn, forever unseen at the dark of the moon.

◀ V115

Ulula Noctis

Wolf Candlestick

A true child of moonlight calls out it's wild rhapsody of darkness. Summoning its kind in the forest of night, where the prey is elusive and the hunt never ends.



V114
Vespertilio
Candlestick



V109
Poe's Raven

Raven Candlestick

The cry of "Nevermore" cuts through the Scygan gloom, inspiring Edgar Allen Poe to give poetic voice to The Raven and light our way through the dark night of the soul.

V113

Faust's Familiar

Cat Candlestick



Keeping an all seeing vigil at the witching hour with eyes that see beyond the veil, as spirits are invoked to serve an unseen enchanter. Nine times he returns to tell of things yet unknown.

V116
Owl of Astrontiel

Owl Candlestick

Attendant spirit to a dark goddess and silent spectre of the wilderness, bringing gifts of erudition and prophecy to those with an appetite for midnight.



COFFIN CASKETS



V118
Bride of
The Dark Kiss
Casket & Figure



Removable 3D figure
and secret mirror on the
reverse of the coffin lid.



◀ V117
Nosferatu's Rest
Casket & Figure
Noble progenitor of the royal bloodline.
The prince of darkness lies supine in the
deathless sleep of eternity. The prophecy
tells he will rise again and the night shall
rejoice.



V117
Nosferatu's Rest
Casket & Figure

▲ V118
Bride of The Dark Kiss
Casket & Figure
Untainted by dawn's embrace, the fairest
beauty is shunned by death's long shadow.
Dreaming of sweet blood in the eternal
hibernation of the damned.



GPP6
Witches Spell Garden

Plant Pot
 A stunning plant pot featuring the only plants and herbs a true witch will ever need to grow. Thyme, Lavender, Sage, Rosemary, Nightshade, Hemlock, Nettle, Mugwort, Valerian, Mint, Basil, Wolfsblane.



Alchemy Plant Pots

The essential vessel for those who would harness the botanical wisdom of the ancients. Be you Alchemist or Apothecary with a passion to nurture the bounty of nature for good or ill. The flowering of abundance shall be your reward. A must for every witches midnight garden.

Dimensions:
 H: 13.2cm xW: 12.7cm x D: 12.7cm



GPP1
 Witches Garden



GPP2
 Magic Garden



GPP3
 Catnip



GPP4 Water Don't Torture



GPP5 Wet Your Plants



GPP7 Dead Plant

MUG WARMERS

Light the sacred flame of rituals long past to evoke a purifying warmth that will drive out the demons of discomfort through an incantation and a Witch's brew.

Multi-use mug warmer stands; simply pop a tealight into the base and keep your drinks hot for longer (mug included). Or simply use without the mug as a beautiful tealight holder and see shadows of the dark flicker in your boudoir.

By adding your own crystal ball, will also serve perfectly as a scrying stand for your crystal ball as you divine the ghosts of the futures yet to come!

(2 piece set: Mug warmer stand & Mug).



MWCB2 ▲
Cat
Mug Warmer



MWCB1 ▲
Bat
Mug Warmer



MWCB3 ▲
Cauldron
Mug Warmer



MWCB4 ▲
Skull
Mug Warmer



Shown as T-light holder.



Shown as crystal ball stand.

The Vault™

by Alchemy

Original and official:
Quality resin giftware, designed
by Alchemy Studios, England.



V107 Triple Moon Caludron Pot

Pot / Tea Light Holder

The enchantress Ceridwen's vessel of rebirth, transformation and inspiration. By the power of three, so mote it be.

A beautiful cauldron inspired pot, the perfect place for your trinkets and treasure. Tea light can be used with lid off only.



V109 Poe's Raven

Candle Stick Holder

The cry of "Nevermore" cuts through the Stygian gloom, inspiring Edgar Allen Poe to give poetic voice to The Raven and light our way through the dark night of the soul.



V106 Black Raven Photo Frame

Photo Frame (6x4)

Odin's oracle, wisest of birds and herald of the gods, bearing our whispered oaths to the halls of Valhalla. This black resin photo frame can be free standing or wall hung, accommodates a 6x4" picture or photo.

**V112
Lunaeca Tea
Light Holder**

Tea Light Holder

Crepuscular apparition, summoned by devotion and conjured in the temple of Artemis at the dark of the moon. The most darkly beautiful bat tea light holder which will cast shadows of the moon phases around your abode.



**V111
Cathedralic Mirror**

Mirror

Look into the cathedral window and see your reflection! This mirror can be wall hung or free standing.



**V110
Cathedralic Photo Frame**

Photo Frame (6x4)

Invoking the gothic heritage of a lost epoch to fill us with awe and foreboding as we behold it's blackened edifice reaching to the heavens.



**V105
Black Raven
Mirror**

The black raven surrounds a beautiful oval mirror. A totally unique addition to your boudoir. Black resin mirror, can be free standing or wall hung.



To preserve the life of these goblets you must not dish wash or submerge in water. Cup can be wiped clean after use. Decorative item only.

Goblets

Hand finished in finest resin with a steel cup inlay.



Model & Photo : **The Lilith**
@thelilith

VG1 Blood Heart Goblet

Goblet

An Affaire du Coeur - for love shall survive even death. A dark and Delphic romance of the heart between two strange and exotic creatures, affirming a bond that transcends our earthly realm and reaches unto the Elysium fields of eternity.

A stunning hand painted goblet/chalice with skull, heart and vine detail. Inlaid with faux crystals and cabochons representing puddles of blood.

Approx. Height : 18.9cm (7.44")

VG3 Sacred Cat Goblet

Goblet

Sip from the cup and you may divine the feline prophecies of Ailouros, heart spirit of the temple of Amun. Pray for her blessings, for she is the bringer of music, dance, good fortune and joy to everyone.

A stunning hand painted goblet/chalice featuring your favourite feline friend!

Approx. Height : 18.9cm (7.44")



SCENTED CANDLE JARS

Blood Rose

A collection of blood rose red, vintage inspired, lidded candle jars, each encapsulating a sensual scented candle. Light the candle and let the dark sensual aroma of the 'Blood Rose' envelop your boudoir! Once the candle has burnt, these stunning, cut glass effect jars can then be used to keep safe your trinkets and treasures!

SCJ7 ▼ Blood Rose Scented Boudoir Candle Jar (Small)

Candle Jar
A blood red glass candle jar with a scented soy wax candle.
Height approx. 10 cm.



SCJ9 ▼ Blood Rose Vintage Scented Candle Jar (Round)

Candle Jar
A blood red glass candle jar with a scented soy wax candle.
Height approx. 10 cm.



SCJ6 ▲ Blood Rose Scented Boudoir Candle Jar (Large)

Candle Jar
A blood red glass candle jar with a scented soy wax candle.
Height approx. 13.5 cm.



SCJ6
With lid removed & candle lit.



SCJ9
With lid removed & candle lit.





1
SA21
Small Black
Rose Heart Frame

2
V107
Triple Moon
Cauldron Pot

3
SA20
Black Rose Dressing
Table Mirror

1 SA21
**Small Black
Rose Heart
Photo Frame**
Photo Frame (3x3)

Tiny black roses form a heart shape to display a photo of your loved one. Fits a 3"x3" photo. Frame can be free standing or wall hung.

2 V107
**Triple Moon
Cauldron Pot**
Pot / Tea Light Holder

The enchantress Ceridwen's vessel of rebirth, transformation and inspiration. By the power of three, so mote it be.

3 SA20
**Black Rose
Dressing Table Mirror**
Table Mirror

A beautiful addition to your boudoir and dressing table. A freestanding resin dressing table mirror with black rose detail.

V108
**Black Moon
Hand Mirror**
Hand Mirror

Glimpsed through the shroud of deepest night - The lunar goddesses dark aspect. Bathing us in her baleful power.

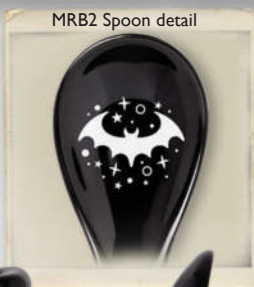
Alchemy designed, cauldron inspired, lidded bowls, complete with spoon & featuring unique Alchemy artwork. Perfect for soups, broths, cereals and serving snacks.

BOWL AND SPOON SETS

The set comprises of 3 pcs; bowl, lid and spoon all presented in Alchemy branded packaging. The bowl will hold a standard size tin of soup approx. 425ml (14oz). (Suitable for Oven, Microwave and Dishwasher use.)



MRB2
Bat Broth
Bowl & Spoon set



MRB2 Spoon detail



MRB5
A Bite To Eat
Bowl & Spoon set



MRB5 Spoon detail

Batty about bats, food and nice things to put food in? We just know you're going to love this Alchemy 'broth' lidded bowl and spoon set. A fantastic way to enjoy your, broth, soup, cereal or stew!

Fancy 'A Bite To Eat'.... Would you dare eat from a vampires pot? A unique lidded bowl and spoon set perfect to serve or slurp from!!



MRB6
Witches Secret Recipe
Bowl & Spoon set



MRB6 Spoon detail

Hubble Bubble, what's contained within the witches cauldron? A witches pot for making potions, spells and divine dinners!



MRB7
Feline Hungry
Bowl & Spoon set



MRB7 Spoon detail

A truly unique gift for that feline loving friend of yours. A stunning lidded bowl and spoon set featuring a black cat silhouette and moon design and the words 'Feline Hungry'.



MRB4 Spoon detail.



MRB4
So Hungry
Bowl & Spoon set
I'm 'So Hungry' I could eat myself!
A fantastical dragon ouroboros features on this unique lidded bowl and spoon set!

Shown with lid removed.



V50 ▼
Anguistralobe

Desk Clock

A Daedalian C18th instrument which measured the direct path of destiny between specified heavenly bodies. Requires 1 x 1.5v, AA battery - not included.



V88 ▼
Wiccan Desk Clock

Clock

The sacred triple moon, revered and understood by the ancients. Who's unseen rhythms lead the fertility and harvest of the land and sea through the endless cycle of time. Requires 2 x AA batteries - not included.



V15 ▲
The Stormgrave Chronometer

Desk Clock

Professor Stormgrave's patent celestial chronometer, mapping the forces that govern the passing of eternity. Requires 1 x 1.5v, AA battery - not included.



V71 ▲
Grimalkin's Ghost

Desk Ornament

Feline familiar to the great French prophet and astrologer - Nostradamus, who having outlived his master, carried the seer's arcane wisdom from Paris to London where he eventually fell in with one William Shakespeare.



V17 ▲
Poe's Raven

Desk Ornament

Inspiring Edgar Allan Poe, Master of the Macabre to give poetic voice to the Raven, "NEVERMORE".

V86 ▼

Triple Moon

Wall or Desk Photo Frame

Arianrhod's ancient symbol of the waxing, full and waning moon. The goddess as maiden, mother and crone in a cosmic cycle of life and death, reincarnation and rebirth.



V86 Photo - Mahafsoun



V87 Triple Moon

V87 ▲

Triple Moon

Wall or Desk Mirror

V85 ▶

Triple Moon

Trinket Dish / Candle Holder

Hallowed altar to the goddess Cerridwen, cauldron of wisdom and vessel of the sacred flame, watched over by the horned crescents of the virgin and the crone.



V85 Triple Moon



◀ V104B

Skull Moon Box (Matte Black)

Trinket Box

The old man in the moon is not always the avuncular gentleman of fairy tales, but the vestige from a time when night's true terror was felt by all.

Approx. height 20.3cm.



◀ V104S

Skull Moon Box (Silver)

Trinket Box

Approx. height 20.3cm.

HAND MIRRORS



◀ **V64B**
Sacred Cat Hand Mirror (Black)

Hand Mirror
Gaze into the glass long enough and you shall divine the feline prophesies of Ailouros, hearth spirit of the temple of Amun.
Approx. height: 22cm.



▶ **V64**
Sacred Cat Hand Mirror

Hand Mirror
Gaze into the glass long enough and you shall divine the feline prophesies of Ailouros, hearth spirit of the temple of Amun.
Approx. height: 22cm.



▶ **V80B**
Devil's Heart Hand Mirror (Black)

Hand Mirror
Saint or Sinner?
Love, dark passions, and lustful desires are akin to the rapturous reflection that sees all.
Approx. height: 23cm.





V62
Anguistralobe

Trinket Dish

Commemorative dish celebrating the C18th instrument which measured the direct path of destiny between specified heavenly bodies. Approx. diameter 9cm.



V61
Vampyr Bat

Trinket Dish

The torpid revenant awakens to the moon dawn, to quench it's thirst for mortal blood. Approx. width 8cm.



V60
Half Skull

Trinket Dish

Cleaved asunder, the untenanted skull of a once mighty overlord who's sequestered secrets hide within it's fissures. Approx. width 8.5cm.



V103 ▲
Hour Of The Wolf Box
(Antique Silver)

Trinket Box

Enchanted by the beckoning tide of midnight. A true child of the moon, calling out across the limitless wilderness. Approx. width 8.5cm.



V92 ▲
Triple Moon Spell Box

Trinket Box

A magical casket dedicated to the three aspects of the moon goddess: maiden, mother and crone. Drawing down the planetary influences of Mercury, Mars, Venus and the Earth beneath our feet, to enhance your spellcraft for good or ill.

MINIATURES



VM4
Dragon
Keepers Skull



VM2
Unicorn
Resin Miniature
Approx. height 4.5 cm.



VM5
Demon Skull



VM10
Pumpkin Skull
Resin Miniature
Approx. height 3 cm.



VM9
Dragon Skull
Resin Miniature
Approx. height 2.2 cm.



VM6
Alchemist Skull
Resin Miniature
Approx. height 2.5 cm.



VM1
Ram Skull
Resin Miniature
Approx. height 2.5 cm.



VM5
Demon Skull
Resin Miniature
Approx. height 3.1 cm.



VM4
**Dragon
Keeper's Skull**
Resin Miniature
Approx. height 3.6 cm.



VM8
Steamhead Skull
Resin Miniature
Approx. height 3.9 cm.

These miniature models form part of the sought after high quality resin collection by Alchemy. Each miniature is lovingly made and painted by hand with intricate detail, making them the perfect gift for a loved one or a talisman to treasure! There are 8 extraordinary designs why not collect them all!

(Miniatures are illustrated here larger than actual size. Sizes range between 2.2cm high - 4.5cm.)



**V67 ▲
Omega Raven Skull**

Desk Ornament

Inscribed with protective wisdom of arcane cabalistic spells and channeling the influence of Huginn and Muninn, Odin's harbinger birds of thought and memory. Approx. length 16.5cm.



**V66 ▲
Reliquary Raven**

Ornamental Raven / Necklace

To the followers of Mithras, the raven was a symbol of initiation into the deeper mysteries. A sacred talisman to steady the course and point the way through life's maelstrom. (Leather thong not supplied) Approx. length 6cm.



**V41 ▶
Metalised Alchemist Skull**

Desk Ornament

A life-sized Alchemist's skull, immortalised in the mercurial lustre of the secret arts. With the traditional golden tooth. Approx. height, 13.5cm.



**V2 ▲
Lapillus Worry Skull**

Pocket Bead

A diminutive yet uncanny skull to comfort and guide a troubled soul. Approx. height 1.5cm.

**◀ V74
Skull T-Light Holder**

T-Light Holder

Thought shines eternally bright, whilst the ephemeral body withers as fallen fruit in the ground. Approx. height 4cm.



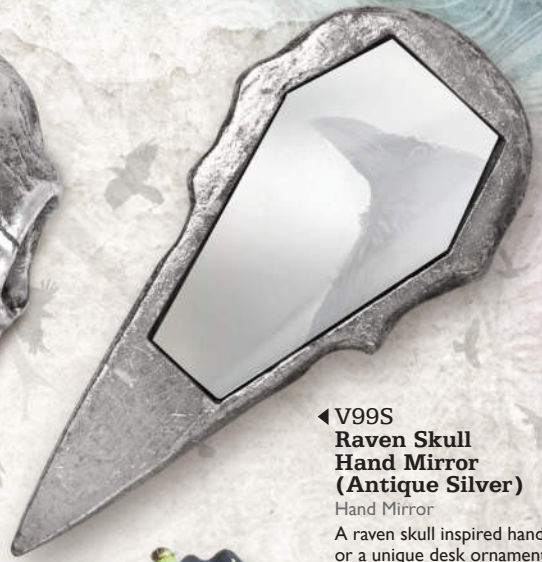
**V16 ▲
Corvus Alchemica**

Desk Ornament

A larger than life mystic raven skull, personifying the ancient god of prophecy, ill omen and lost souls. Approx. length 16cm.



DARK BOUDOIR



◀ V99S
**Raven Skull
Hand Mirror
(Antique Silver)**

Hand Mirror
A raven skull inspired hand mirror
or a unique desk ornament.
Approx. height 15.2 cm.



FLO01 ▲
Tulips Bunch

Tulips
This collection of
convincingly artificial
flowers will add a divine
darkness to your home.



◀ FLO02
**Black Lily
Bunch**

Lilies
These stunning artificial
flowers are the perfect
way to adorn your
crypt or boudoir.



ROSE8 ▲
Black Rose Spray

Roses
The iconic Alchemy Black Rose
has blossomed into a collection
of stunning flowers to adorn
your crypt or boudoir.





SA17 ▲
Rose & Vine (Black)

Photo Frame

A beautiful decorative entwined rose and vine photo frame. To fit a 6x4" image.

SA19 ▼
Rose Heart (Black)

Trinket Box

A delicate rose detailed heart-shaped trinket box. The perfect place for treasured keepsakes to hide.



SA24
Rose & Vine (Black)

Mirror

Decorative Rose & Vine mirror in matte black resin with glass front. From the Shades of Alchemy collection.

Free-standing or wall mounted. 6x4".

SR5 ▶
**Freaks Like Me
 Drink Tea**
 Ceramic Spoon Rest



CT9 ▲
Freaks Like Me...
 Ceramic Trivet
 A darkly beautiful
 addition to any kitchen.

CT10 ▼
Dead Thirsty
 Ceramic Trivet
 A dark and functional
 teapot shaped coaster
 bearing the 'Dead Thirsty'
 baroque skull design.

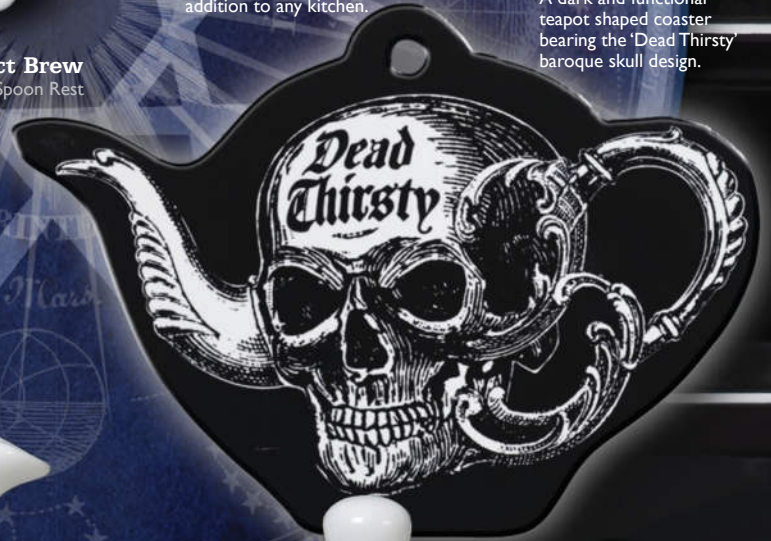


SR7 ▲
Purrfect Brew
 Ceramic Spoon Rest

SR4 ▲
Witches Brew
 Ceramic Spoon Rest



SR8 ▶
Bat Brew
 Ceramic Spoon Rest



▲ AT55
Bat Brew
 Tea For One Set
 A beautiful, high quality, fine bone China,
 'Tea For One Set'. This three piece set
 includes everything you need to brew
 your perfect cup of tea. Presented in
 a striking gift box and features the
 'Bat Brew' design. Dishwasher safe.



▲ AT53
Witches Brew Hex
 Tea For One Set
 A beautiful, high quality, fine bone China,
 'Tea For One Set'. This three piece set
 includes everything you need to brew
 your perfect cup of tea. Presented in
 a striking gift box and features the
 'Witches Brew Hex' design.
 Dishwasher safe.



CAULDRON COASTERS



Alchemy designed, cauldron inspired coasters are here! This exclusive ceramic cauldron shape has been created to perfectly present our most popular Alchemy artwork! A sensational gift for the Witch or Warlock in your realm.

(Coasters are approx. 96mm X 136mm with non-slip cork backing.)



CC26 ▶
Ouija
Cauldron-Shaped
Coaster



CC27 ▲
Witches Brew
Cauldron-Shaped Coaster

CC28 ▲
Nosferabru
Cauldron-Shaped Coaster



CC29 ▲
Purrfect Brew
Cauldron-Shaped Coaster

CC30 ▲
Magical Catnip
Cauldron-Shaped Coaster



CC31 ▲
Bat Brew
Cauldron-Shaped Coaster

CC32 ▲
Freaks Like Me...
Cauldron-Shaped Coaster

MUG AND SPOON SETS



ALMUG15
Hexy Witch
Mug & Spoon Set

ALMUG16
Witches Brew
Mug & Spoon Set



Cause a stir with these incredible mug and spoon gift sets! Perfect for that tea or coffee loving friend!
Or maybe a little treat just for you, it will truly serve you a fiendishly good brew.



ALMUG17
Stirring Up Trouble
Mug & Spoon Set

ALMUG18
You Stir My Blood
Mug & Spoon Set

ALMUG20
Purrfect Brew
Mug & Spoon Set



ALMUG21
Bat Brew
Mug & Spoon Set



390ml (13oz) Capacity with double-sided, custom design on mug & mini design on spoon.



ALMUG22
Stirring Up Magic
Mug & Spoon Set



ALMUG23
Baphomet
Mug & Spoon Set

COUPLES MUGS

Couples Mug sets are a truly unique and exquisite gift, perfect for weddings, anniversaries or to show that special someone just how much you love them!
Set of 2 complimenting, fine bone China* mugs, with decorative heart shaped handles and featuring original Alchemy artwork.



CM1 Witch & Warlock

Couples Mug set
Witches and Warlocks will be sipping potions and making magic with these divine mugs.

350ml
(11oz) Capacity
with double-sided,
custom design
on mug.



CM2 Queen of the Night & Lord of Darkness

Couples Mug set
State your status as the ultimate power couple and be the Queen of the Night & Lord of Darkness - rulers of your own empire!



CM3
Love Birds

Couples Mug set

These beautiful 'Love Birds' couple mugs feature original Alchemy art work of ravens forming a heart shape, the ultimate symbol of love just with a darker twist!



CM4
Saint & Sinner

Couples Mug set

Saint or Sinner! You choose! One day a sinner, turn the mug around and you are a saint! Featuring both artworks on different sides, one side saint cat, the other side sinner cat!

Gift Box Packaging



Couples Mug sets come in purpose designed, sturdy presentation boxes making them the perfect gift!

*Fine bone China does not contain animal material.

TRAVEL MUGS

Show the world your own unique style when on the go! These incredible travel mugs are made from the highest quality ceramic material and double walled to insulate. They keep your drinks hot or cold for longer than you will believe.



MRDWM8 ▲
Saint & Sinner
Double Walled Travel Mug



MRDWM10 ▲
Ouija - Good Brew
Double Walled Travel Mug



MRDWM9 ▲
Magic Brew
Double Walled Travel Mug



MRDWM7 ▲
Freaks Like Me Drink Tea
Double Walled Travel Mug



MRDWM6 ▲
Bat Brew
Double Walled Travel Mug



MRDWM3 ▲
Purrfect Brew
Double Walled Travel Mug



MRDWM2 ▲
Gothee Coffee
Double Walled Travel Mug



MRDWM1 ▲
Witches Brew
Double Walled Travel Mug

All mugs are approx. 15cm in height. Capacity 360ml (12oz) and all come in purpose designed, sturdy presentation boxes.

BOTTLE STOPPERS



RGBS1
Vampire Blood
 Bottle Stopper
 Is that red wine you're drinking or perhaps its 'Vampires Blood'?



RGBS2
Let's Get Hammered
 Bottle Stopper
 Let's Get Hammered - Why the devil not!!!



RGBS3
Wyverex Dragon
 Bottle Stopper
 The classic and original artwork by Alchemy beautifully adorns this bottle stopper!



RGBS4
Triple Moon Cat
 Bottle Stopper
 A magic black cat guards your sacred drink!



RGBS5
Black Cat
 Bottle Stopper
 A mysterious guardian for your bottle!



RGBS6
Poison
 Bottle Stopper
 Is it really Poison?
 Would you dare to take a sip?



RGBS7
Demon Drink
 Bottle Stopper
 The Demon Drink cleverly inscribed within a Devils skull!



RGBS8
Witches Potion
 Bottle Stopper
 Dare you drink the 'Witches Potion'? Protect your favourite tippie with this cunning rebrand!



RGBS9
Drink Me If You Dare
 Bottle Stopper
 Do you dare drink the contents of the bottle? This 'Drink Me If You Dare' bottle stopper just might make you think twice!

Wonderfully unique ceramic & cork bottle stopper collection for your favourite tippie or perhaps a gift for a loved one. Adorned with original Alchemy artwork - 9 to collect!

Approx. 40mm diameter.



CERAMIC COASTERS

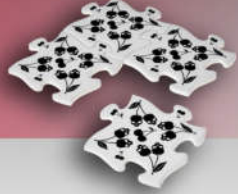


Original Alchemy artwork Ceramic coasters for your hot drinks, cold drinks, Gothtails or spirits....perfect for your Crypt!
Why not collect the whole range!

(All coasters come with a non-slip cork backing and are sold separately)



CJ4
Black Skull Cherries
Ceramic Jigsaw Coasters
Black cherries or black skulls?
You decide! 4 piece coaster set.



CJ5
Black Raven & Rose
Ceramic Jigsaw Coasters
Alchemy raven and rose
4 piece jigsaw coaster set.



CCI - The Demon Drink



CC2 - Summon the Spirits



CC4 - Feeling Absinthe Minded

Individual Ceramic Coasters
Sold Separately



CC8 - Catty Without Coffee



CC9 - Dead Thirsty



CC10 - Black Coffee

Original Alchemy ceramic artwork coasters with slate-style edges and a high gloss finish. (Dimensions: approx. 10.8cm X 10.8cm)



**CC11
Chemical Wedding**
Ceramic Slate-Style Coaster



**CC12
Poe's Raven**
Ceramic Slate-Style Coaster



**CC13
Sacred Cat**
Ceramic Slate-Style Coaster

Original Alchemy ceramic artwork cut-out shaped coasters.
(Skull coaster dimensions: approx. 12cm X 9.5cm; Cat coasters: approx. 11cm X 10.5cm)



**CC16
Triple Moon Cat**
Ceramic Cat-Shaped Coaster
Dark but cute, this triple moon magic cat coaster is definitely that!



**CC17
Sacred Cat**
Ceramic Cat-Shaped Coaster
The exquisite and sought after Alchemy original artwork bestows this purrfect cat shaped coaster!

Original Alchemy ceramic artwork coasters in classic circular design. (Dimensions: approx. 9cm X 9cm)



**CC18
Baphomet**
Ceramic Coaster
Add some devilish decor to your crypt. This Baphomet coaster will subtly show your dark side... 'If you know, you know!'



**CC19
Love Birds**
Ceramic Coaster
This beautiful 'Love Birds' coaster features original Alchemy artwork of Ravens forming a heart shape, the symbol of love with a darker twist!



**CC25
Warlock**
Ceramic Coaster
Calling you Warlocks out there, celebrate your magical powers with a little home decor!



**CC20
Saint**
Ceramic Coaster
Are you a saint or are you a sinner? Whatever you are this original Alchemy artwork coaster will definitely be a talking point for your guests.



**CC21
Sinner**
Ceramic Coaster
Are you a sinner or are you a saint? Whatever you are this original Alchemy artwork coaster will definitely be a talking point for your guests.



**CC22
Lord of Darkness**
Ceramic Coaster
For the 'Lord of Darkness' is your life! Team with the 'Queen of the Night' coaster and state your position as the ultimate power couple of the dark night!



**CC23
Queen of the Night**
Ceramic Coaster
For you the one and only Queen of the Night! Teamed with the 'Lord of Darkness' coaster.



Your meals will be cooked to purrfection with these purrfect 'Cat's Kitchen' Kitchen Utensils! Soft non-toxic, silicone utensils which work effectively and will protect your cookware. BPA Free, FDA approved.



KU1
Cat's Kitchen
Spatula



KU2
Cat's Kitchen
Pasta Spoon





KU3
Cat's Kitchen
Spoon



KU4
Cat's Kitchen
Slotted Spoon



KU5
Cat's Kitchen
Ladle



KU6
Cat's Kitchen
Whisk



CT11 ▼
Roses Are Black...

Trivet

A totally functional trivet or a decorative piece for the boudoir! A perfect token of love!



CT4 ▲
Cat's Kitchen

Ceramic Chopping Board

The dark and beautiful Alchemy black cat artwork is presented on this unique 'Witches Kitchen' chopping board.



CT5 ▲
Hot Stuff

Ceramic Chopping Board

Looking for some hot stuff in your kitchen? Then look no further than this devilish addition to your kitchen space.

All trivets and chopping boards can be hung up on a wall or used as a functional item. Either slice food, stand hot pans on, or used as a fun serving platter!

CT12 ▶
**Witches
Kitchen**

Trivet

A magical 'Witches Kitchen' chopping board / serving trivet. Stand this beautiful piece next to your bubbling cauldron and be the envy of witches for miles around!



SALT & PEPPER SETS

Ceramic Salt & Pepper Sets.
Food & Dishwasher safe.



▲ MRSP4
White Magic / Black Magic
Salt & Pepper Set

▲ MRSP5
S - Spells / P - Potions
Salt & Pepper Set



▲ MRSP1
S+P
Salt & Pepper Set

▲ MRSP2
Ashes / Dust
Salt & Pepper Set

▲ MRSP3
Cats
Salt & Pepper Set

Cast Iron Bottle Openers



SUBSTANTIAL
CAST IRON BOTTLE
OPENERS. THE PERFECT
ADDITION TO YOUR HOME
DRINKS PARAPHERNALIA.



CT7 ▲ Skull Cupcake

Ceramic Trivet
This dark but cute skull cupcake artwork will look sensational in any kitchen or dining room.

◀ CT6 Trick or Treat

Ceramic Trivet
This 'Trick or Treat' trivet or serving plate is not just for Halloween. Display treats all year round on this darkly delightful piece.

BLACK ROSES



◀ ROSE3
**Large Black
Rose Head**
Black Roses
An oversized artificial
black rose with soft
foam rose petals.

ROSE4 ▼
**Small Black
Rose Head**
Black Roses
An oversized artificial
black rose with soft
foam rose petals.



▼ ROSE6
**Black Rose
Hanging Ball**
Black Roses
A bundle of artificial
soft foam black roses
with hanging wire.



SCR3 ▲
Black Rose Candle Holder
Candle Holder (Pillar)
Created to fit a pillar candle,
this holder can also be used
as a useful little pot.

DARK ★ ART T-LIGHT HOLDERS



TLH6
Danu Goddess

T-Light Holder
Thrice great mother of the earth
and all of the gods.

Candle light flickers chasing shadows of decorative beauty as Alchemy's Dark Art T-lights imbue your inner sanctum with homely ambience illuminating the darkness and guiding you towards the dawn.

Made from black-coated iron and glass. T-light not supplied.



**TLH7
Celestial Cat**

T-Light Holder

The tides of time wax and wane watched over by a divine feline protector.



**TLH5
Witch By
Moonlight**

T-Light Holder

The deep tidal magic that dwells within all of our souls summons us to take to our broomsticks and fly.



**TLH4
Death's Head Moth**

T-Light Holder

Acherontia Atropos, the infamous Death's Head Hawkmoth is steeped in myth and meaning. Named after Atropos, the Fate who cuts the thread of life, this haunting creature has long been seen as a harbinger of death, bearing the unmistakable skull-like mark of the reaper.



**TLH3
Personal
Baphomet**

T-Light Holder

Feeling unknown, and you're all alone. Someone to hear your prayers, someone who cares someone who's there.



**TLH2
Unicursal Hex**

T-Light Holder

Used in the 16th century by philosophers and hermetic occultists to represent the 'figure of love', and by the infamous Aleister Crowley as the heavenly macrocosm, the entwining of the planetary and elemental forces.



**TLH1
Angels & Demons**

T-Light Holder

The Illuminated sigils of divine and demonic beings in the macrocosm of heaven and hell and all that lies between, the quintessence of enlightenment shall that comes only to the truly adept.

HANGING DECORATIONS



ALCHEMY
 England · 1971



HD24
Danu
Goddess
 Hanging Decoration
 Thrice great mother
 of the earth and all
 of the gods.



HD25
From The Crypt
 Hanging Decoration
 Rising on wings of midnight
 from that forsaken
 subterranean realm,
 with an eternal thirst for
 the blood of the living.



HD26
Zodiac Dream
Catcher
 Hanging Decoration
 Drawing down powerful
 celestial influences to
 ensnare the spirits of
 nightmare, ensuring an
 undisturbed slumber for
 the astral wanderer.

**HD27
Lilith Moon**

Hanging Decoration
The high queen of demons,
fore-filling her full majesty at
the dark of the moon.



**HD29
Witch By
Moonlight**

Hanging Decoration
The deep tidal magic that
dwells within all of our souls,
summons us to take to our
broomsticks and fly.



**HD30
Evolution Moon Phase**

Hanging Decoration
At the full of the moon the
vampiric curse shall reach it's
apotheosis.



**HD28
The Seal of Lilith**

Hanging Decoration
Summoning circle for the
goddess of the dark moon.
The principal influence on all
rebel spirits.



**HD34
Celestial Cat**

Hanging Decoration
The tides of time wax and wane
watched over by a divine feline
protector. The familial spirit sacred
to those who practice the craft.



**HD32
Personal Baphomet**

Hanging Decoration
Feeling unknown
and you're all alone.
Someone to hear your prayers,
someone who cares,
someone who'e there.



**HD31
Death's Head Moth**

Hanging Decoration
Acherontia atropos -
A portent of sudden death,
bearing the mark of
the reaper.



**HD33
Moon Gazer**

Hanging Decoration
Forever fixated by the
cusp of light that cleaves
the night asunder, Grimalkin
sees the future yet his
prophesies go unspoken.



HANGING DECORATIONS



Add your own unique style to any room, home or garden with these Alchemy designed hanging decorations / wind chimes.

- Suitable for both indoor and outdoor use. -



HD13 Pentagram

Hanging Decoration
Featuring three dancing pentagrams. This hanging decoration will look incredible in your home, boudoir or garden.



HD8 Pentagram Dream Catcher

Hanging Decoration
Shimmer and shine in the light and catch your dreams at night.



HD22 Night Owl

Hanging Decoration
Companion to Athena the Greek goddess of wisdom and war.



**HD11
Wyverex Dragon**
Hanging Decoration
Based on our original
iconic Alchemy Wyverex
dragon. Truly a fantasy
lovers dream décor item.



**HD12
Gothic Bat**
Hanging Decoration
The Gothic icon the
black bat can now be
a centre piece in your
crypt or garden.



**HD9
Black Cat
& Moon**
Hanging Decoration
Add a little witchy
magic to your outdoor
space or home interior.

HANGING DECORATIONS



**HD17
Viking**
Hanging Decoration
Enjoy your home on Midgard with this wind chime displaying the runic abbreviations of the nine realms of the Viking world.

**HD19
Devil Heart**
Hanging Decoration
Love, is sinful, naughty and oh, so much fun!



**HD18
Planchette**
Hanging Decoration
Celebrate the technology of the 19th century seance.



**HD16
Pumpkin Skull**
Hanging Decoration
Add a bit of spookiness to any domicile with this jack-o-lantern pumpkin wind chime





HD20
Cat Silhouette
Hanging Decoration
Complete your home interior transformation or simply add a little witchy magic to your outdoor space.



HD21
Baphomet
Hanging Decoration
Framed upon the occultist's pentagram, Eliphas Levi's portrait and representation of the dualist, goat-headed deity.



HD23
Night Unicorn
Hanging Decoration
The magical power of the unicorn rests in its singularity for it is the sole survivor of an ancient lineage, who's fellows all perished in the great flood.

ALCHEMY



England · 1977

COURT OF THE BLACK ROSE

ALCHEMY

England · 1977

COURT OF THE BLACK ROSE

CALENDAR
2026



DARE TO DELVE INTO THE SHADOW REALMS WITH THIS SUMPTUOUS SIXTEEN MONTH CALENDAR RICHLY ILLUSTRATED THROUGHOUT WITH ALCHEMY'S MESMERISING BRAND OF GOTHIC ARTWORK. A RICH TAPESTRY OF SUPERNATURAL MYTH AND OCCULT MYSTERY THAT ADORN THE HALLOWED HALLS IN THE COURT OF THE BLACK ROSE.

A SIXTEEN MONTH CALENDAR BEGINNING IN SEPTEMBER 2025 AVAILABLE TO ORDER NOW

WWW.ALCHEMYENGLAND.COM



CODE:
CAL26

ALCHEMY



England · 1977

CALENDAR 2026



Neverworld

AVAILABLE TO ORDER NOW

CODE:
CAL26BW



WWW.ALCHEMYENGLAND.COM

© 2025 ALCHEMY CARTA LTD.

ALL ARTWORKS AND TRADEMARKS ARE PROPERTY AND COPYRIGHT OF ALCHEMY CARTA LTD.



LED LIGHTS

Add your favourite creature of the night to your home or garden and illuminate for all to see! These solar LED lights will be the perfect addition to your home or garden.

Battery powered LED lights.

To operate: Simply push the ON button and wait for night to fall.

(For indoor or outdoor use.)



GL-QZ1
Indoor use

GL-QZ1 ▲▶
Bat Garden Light
LED Light



GL-QZ1
Outdoor use



GL-QZ2
Indoor use

GL-QZ2 ▼▶
Black Cat Garden Light
LED Light



GL-QZ2
Outdoor use



® TM

~ OFFICIAL MERCHANDISE ~

THE MAN IN THE MOON COLLECTION



◀ P813
**M'era Luna -
 Man In The Moon**
 Velvet Ribbon Choker
 The unmistakable face of the
 World's greatest Goth & Alternative
 music festival, M'era Luna, inspired by
 the classic Georges Melies' 1902 film,
 'Le Voyage dans la Lune'.

Can also be tied around the wrist as a bracelet.



◀ P782
**M'era Luna -
 Melie's Moon**
 Pendant
 A rare glimpse at the real man in
 the moon, seen through the thicket's
 gnarled and twisted branches.
 Pewter and mirror, relief modelled
 man in the moon pendant.

SOCKS



SOX001
Catmas
 Socks (S/M, M/L)



SOX002
The Alchemist
 Socks (S/M, M/L)



SOX004
**Feet Are
 Killing Me**
 Socks (S/M, M/L)



SOX005
**Dead Man
 Walking**
 Socks (S/M, M/L)



SOX006
**Dead on
 My Feet**
 Socks (S/M, M/L)



OFFICIALLY
LICENSED

ALCHEMY[®] ROCKS

OFFICIALLY
LICENSED



PP500
Metallica -
Ninja Star



PP501
Iron Maiden -
Book Of Souls Eddie



PP504
Iron Maiden -
Piece Of Mind Eddie



PP505
Motorhead -
War Pig



PP506
Pink Floyd -
Dark Side Prism



PP507
Metallica -
Master Of Puppets
1986 Cross



PP508
Slayer -
Pentagram Logo



PP510
5 Finger Death Punch -
Knuckle Duster



PP515
David Bowie -
Flash



PP517
Judas Priest -
Razorblade



PP520
AC/DC -
Lightning Logo



PP522
Ghost -
Papa Logo



PP523
Metallica -
M72 Logo



PP524
AC/DC -
PWR UP Flash Logo

neckwear



PP525
Behemoth -
Cross Logo



PP526
Behemoth -
Opvs Contra Natvram



PP527
Lamb of God -
Logo



PP530
Iron Maiden -
50th Anniversary



PP528
Poppy -
Logo



PP529
Linkin Park -
Logo



PP531
Sleep Token -
Logo

earrings



PE1
Motorhead -
War Pig Studs



PE6
Iron Maiden -
Piece Of Mind
Studs



PE9
Pink Floyd -
Division Bell
Studs



PE4
AC/DC -
Logo Studs



PE8
David Bowie -
Flash Studs



PE17
Metallica -
Ninja Star Studs



PE16
Ghost - Logo
Droppers



PE18
Poppy - Logo
Droppers



PE19
Linkin Park -
Logo
Droppers



PE20
Sleep Token -
Logo
Droppers

wrap rings



PR51
Metallica -
M72 Logo



PR52
David Bowie -
Flash Logo



PR53
AC/DC -
Logo

pin badges



PC501
Motorhead -
Logo



PC502
Pink Floyd -
Division Bell Heads



PC504
Slayer - Eagle



PC505
Iron Maiden -
Enamelled Logo



PC506
Metallica -
Damage



PC513
Metallica -
Justice For All



PC514
Mötley Crüe -
Dr. Feelgood
* Not available in the U.S.



PC515
Motorhead -
Warpig



PC516
Metallica -
Master Of Puppets



PC517
Judas Priest -
Razorblade



PC518
Ghost -
Logo



PC519
Linkin Park -
Logo



PC520
AC/DC - PWR/UP



wallet chain

PWC4
Metallica -
Classic Logo

armwear



HRWL464
Linkin Park -
Lettering Logo



HRWL463
Judas Priest -
Razorblade Logo



HRWL461
Poppy - Logo



HRWL466
Sleep Token - Logo



HRWL462
Motorhead - Warpig



HRWL465
Sleep Token - Logo



HRWL444
Metallica -
Logo



HRWL446
AC/DC -
Logo



HRWL456
Metallica -
Classic Logo



HRWL452
AC/DC -
Lightning Logo



HRWL459
Metallica -
Ninja Star



HRWL447
Iron Maiden -
Logo



HRWL457
Ghost -
Logo



HRWL453
Iron Maiden -
Logo



HRWL458
Behemoth -
Logo



HRWL460
Lamb of God -
Logo

ALCHEMY[®]™



England • 1977

Alchemy LIFETIME GUARANTEE . . . Alchemy is the best!

And we guarantee our Alchemy England crafted pewter products* to be hand made to the highest standards and of the finest materials, and will therefore repair or replace any such purchased item suffering from defects or faulty workmanship at any time, free of charge!

(*made at our Leicester workshops - please see our Guarantee and Returns Policy at www.alchemyengland.com/guarantee).

Real Pewter!

The metal used in the manufacture of all Alchemy's pewter products is the highest grade "English Pewter". Some manufacturers misleadingly use the term 'pewter' to describe alloys containing quantities of lead, cadmium and nickel plating etc. This is **NON COMPLIANT** and results in inferior, more easily made products which are heavier, softer and of a darker colour and are much more prone to tarnishing and disfigurement. Please note, many imitations and forgeries are also made of zinc, which is cheap and will easily break. English Pewter is the finest grade of pewter, (to BSEN611-1:1995 standard). Traditionally, pewter was a mixture of lead and tin, but today, English Pewter is a rich, high-grade alloy of 92% tin with copper, (plus a few legitimate trace elements), and is regarded as a 'semi-precious' metal valued second only to silver. For jewellery and accessories this is the safest tin-based alloy in use and is fully lead, cadmium & nickel compliant to California Proposition 65 for total lead & cadmium content, Commission Regulation (EU) 494/2011 (REACH) for lead & cadmium and European standard BSEN1811:2011 for nickel. English Pewter is very much harder to craft than zinc alloys and the old and primitive forms of pewter, which contain significant amounts of toxic impurities which ease production, however, please beware as these poor alloys are still used by many manufacturers around the world today.

Brand Protection:

All products, designs and images are the exclusive copyright of Alchemy Carta, England, and are registered designs and trademarks world-wide. Alchemy Studios conceive, research, design and develop all their ideas and products themselves, at considerable cost, to bring you fresh, new creations. Any attempt at forgery, imitation or passing-off endangers Alchemy's existence. Therefore, infringements will result in investigation leading to prosecution. Any assistance from our customers against piracy will be greatly appreciated. Please report via our website.

Looking after your Alchemy

Pewter, like silver, may tarnish, but can easily be polished up to a brilliant lustrous shine, using a brass or silver polishing wad and a wipe with a dry cloth. DO NOT put pewter into a salt-loaded dishwasher, which could corrode a polished surface. Alchemy Guarantee: Alchemy will gladly replace any product proven to be defective.

Trade Memberships

Alchemy Carta Ltd. are proud to be members of the Giftware Association.

Trade & Identification Marks

All products, space permitting, are marked with one or more of the following identification marks, or their derivatives :



www.alchemyengland.com



Model is wearing:

P864 Rose Briar necklace
E425 Love Bats earrings

Model: Lillith Vampire. @lillith_vampire

Disclaimer:

At Alchemy we make all our jewellery by hand. We are very proud and work extremely hard to achieve our high standards. However, we also have to buy-in components from other suppliers and while we do our very best to maintain this quality, we cannot always rely on their availability or consistency. We therefore reserve the right to change crystals, chains and other findings, or even to discontinue pieces if necessary and apologise for any such disappointment.

